

**KOBRA®**  
*Advancing Technology*

PROFESSIONAL SHREDDERS FOR DOCUMENTS  
AND ELECTRONIC DATA STORAGE DEVICES



**2020**  
**CATALOGUE**



## MEANS AUTHORITY IN DATA SECURITY

**All Kobra shredders comply with the most recognized high security government standards**



The **CIA**, the **National Security Agency**, **ASIO** in Australia, **Minister of Defence in the UK** and the **Japanese Ministry** of Post & Telecommunication are regular users of the KOBRA HS High Security range.

KOBRA HS security level P-6 shredders meet **NATO** security criteria. KOBRA HS-6 and KOBRA Cyclone shredders at security level P-7 are approved by and comply to NSA/ CSS Specification O2-01 standards of the **US Government** National Security Agency and the **CPNI** in the Minister of Defense of the UK.

**All shredders are approved by and comply to the destruction criteria set out by ASIO - Australian Security Intelligence Organisation** - T4 Protective Security. The **special 0.8x5 mm cut** allows a single sheet paper to be shredded into about 16.000 pieces which are completely illegible even under an electronic microscope.

**Kobra SSD High Security Disintegrator** has been approved by **NSA** and meets the requirements of NSA/CSS Specifications for Solid State Drive destruction: shredded material is reduced to **sand-like particles**. Kobra SSD is a solid state drive shredder capable of destroying solid state drives, smartphones, memory sticks, iPads, USB memory devices, pen drives, tablets, circuit boards, credit cards, CDs/DVDs.



*During the G8 and G7 summits a special KOBRA 240 HS High Security shredder was supplied to the Presidents and Prime Ministers of Italy, USA, France, Canada, Japan, UK, Russia and Germany to provide the highest security of their documents.*



## TOUCH SCREEN LINE Technology and Innovation

TS LINE shredders are equipped with a host of advanced design features. Available a comprehensive list of options that has made KOBRA the icon for advanced technology in the multimedia destruction equipment industry.

TS LINE Main features - Pag. **04**  
TS LINE Shredders Options - Pag. **06**  
TS LINE Shredders - Pag. **07**



## CLASSIC LINE Quality and Professional

The highest shredding and security performances with the widest choice ever of shredding solutions.

CLASSIC LINE Main features - Pag. **14**  
CLASSIC LINE Shredders Options - Pag. **16**  
CLASSIC LINE Shredders - Pag. **17**



## INDUSTRIAL LINE Mighty and Power

A complete line of Heavy Duty document, smartphone and electronic storage device shredders.

INDUSTRIAL LINE Main features - Pag. **34**  
INDUSTRIAL LINE Heavy Duty Shredders - Pag. **36**



## Guillotines and Trimmers

Pag. **41**



## Consumable Materials

Pag. **45**

**ISO/IEC 21964 (DIN 66399)**

*Security Levels and  
Data Carrier Classification*

Pag. **47**



# Touch Screen Line Technology

The range of KOBRA TS shredders with Touch Screen Technology is the most technologically advanced on the market today. Functions are activated by simply touching the required icon on the Touch Screen panel.



KOBRA TS shredders come with an **EPC - Electronic Power Control System**. By means of a series of illuminated optical indicators, the operator can control the shredding load, avoid jams and optimize shredding (KOBRA 270, 310, 410TS series).



**Illuminated optical indicators** on the Touch Screen panel show the current status of the machine or Energy Smart® lights up when the machine is into power saving stand-by mode. There is also a light to warn the operator when the cutting knives need to be oiled. In shredders with an automatic oiler, a light comes on when the oil container is empty.



**Touch Screen Technology**  
All controls are activated by simply touching the panel. Keep your finger on the "Forward" control for 5 seconds and the machine will operate for 30 seconds when transparent material needs to be shredded.





## Continuous duty shredding 24 hour a day and Metal Chain Driving System power and reliability

The shredders in the KOBRA TS Line come with a **sturdy steel gears and metal chain drive system** which offer superior reliability and resistance to wear in comparison with cheaper plastic chain drive systems. The development of new blade edges for the **carbon hardened cutting knives** in the KOBRA TS Line, which are unaffected by staples and metal clips, makes it possible to achieve high shred loads with low power consumption.

Special motors **can operate 24 hours a day non-stop without overheating**, allowing for continuous shredding and maximum daily shredding load.



## Energy Smart and Automatic Disconnection from power supply

**Energy Smart®** is the most advanced energy saving system around. When the machine has not been used for just 8 seconds, it goes into automatic power saving stand-by mode and can be restarted by simply inserting material into the machine to be shredded.

When the machine has not been used for 4 hours, it automatically disconnects from the main power supply. No longer any need to switch off the shredder before leaving the office. **Maximum power saving.**



## Automatic Feeder

Shreds up to 170 sheets, whilst the operator can shred paper in the main throat and CDs/DVDs/Credit Cards through the dedicated CD Cutting Unit **at the same time**. Just insert the documents to shred into the automatic feeder and it will shred automatically each document and turn into its stand-by position when shredding is completed. Specially equipped with the patented Anti-Jamming system in case the operator feeds the machine with crumpled or stapled paper (Available for KOBRA 310 TS series).



## Two separate sets of cutting knives

Two entry openings and two sets of cutting knives to separate the shredding of paper from CDs/DVDs/credit cards. Two distinct integrated removable bins to separate shredded material into two bins (KOBRA 260, 270, 310, 410 TS series).

# Touch Screen Line Options

Choose the options to customize your shredder and make it perfect to meet your shredding needs.



**Art. Code +AO**

## **AUTOMATIC OILER**

Integrated automatic oiler: automatically lubricates cross-cutting knives.

Option on all cross cut models.  
Standard on:  
310TS HS and HS-6,  
410TS all models.



**Art. Code +CD**

## **CD/DVD CUTTING UNIT**

Cutting unit dedicated to shred CDs/DVDs and credit cards. Security Level O-1 T-2 E-2.

Standard on all models.  
Option on:  
260TS HS and HS-6,  
270TS HS and HS-6,  
310TS HS and HS-6.



**Art. Code +AF**

## **AUTOMATIC FEEDER**

Automatically shreds up to 170 sheets.

Option on:  
310TS CC2 and CC4,  
310TS HS and HS-6.



**Art. Code +CD**

## **CD/DVD CUTTING UNIT**

Cutting unit dedicated to shred CDs/DVDs and credit cards. Security Level O-3 T-4 E-3.

Option on models:  
410TS S5, C4 and C2.



**Art. Code +LK**

## **AUTO-FEEDER LOCKABLE COVER**

WITH SECURITY KEY to protect documents to be shredded from prying eyes of unauthorized persons.

Option on:  
310TS CC2 and CC4  
310TS HS and HS-6.

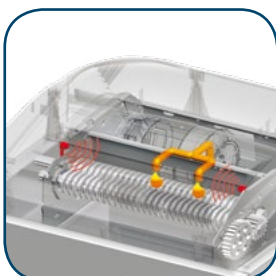


**Art. Code +CD HS**

## **HIGH SECURITY CD/DVD CUTTING UNIT**

Cutting unit dedicated to shred CDs/DVDs and credit cards in high security cut. Security Level O-6 T-6 E-5.

Option on models:  
410TS HS and HS-6.



**Art. Code +MD**

## **METAL DETECTION SYSTEM (SHRED GUARD)**

Detects metal presence to prevent damages to cutting knives.

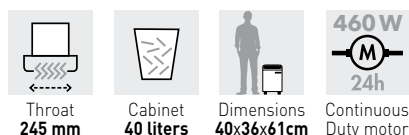
Option on all models excluding:  
245TS SF model,  
310TS auto-feed models,  
430TS models.



# KOBRA 245 TS

## PROFESSIONAL TOUCH SCREEN DESKSIDE SHREDDERS

Shreds up to 29 sheets of paper at a time (A4 70gr), credit cards, CDs/DVDs, floppy disks and films (see model specifications)  
 40 liter cabinet mounted on casters  
 Dimensions (WxDxH): cm 40 x 36 x 61



- **TOUCH SCREEN:** machine functions activated just by touching the icons on the control panel
- **SUPER POTENTIAL POWER SYSTEM:** heavy duty chain drive with steel gears
- **24 HOUR CONTINUOUS DUTY MOTOR** without overheating and duty cycles. Motor thermal protection.
- **CARBON HARDENED STEEL CUTTING KNIVES** unaffected by staples and clips. High precision design of cutting knives allows high shred loads with low power consumption.
- **ENERGY SMART®:** power saving stand-by mode after just 8 seconds of non-operation
- **AUTOMATIC DISCONNECTION** from the main power supply after 4 hours, no need to switch-off the shredder before leaving the office
- **AUTOMATIC START & STOP:** automatic start and stop through electronic eyes

- **SAFETY STOP:** automatic stop at the door opening and/or full waste bag
- **AUTOMATIC REVERSE** in case of jamming
- **Extraordinary Speed for the Kobra 245TS S4 SF Super Fast:** shreds an A4 sheet in just over 1 second

### OPTIONS

#### AUTOMATIC OILER

Kobra TS cross-cut and High Security shredders can be equipped with an integrated automatic oiler, which activates a light signal when the oil bottle is low. This system eliminates the need of manual oiling of cutting knives.

#### METAL DETECTION SYSTEM (SHRED GUARD)

The Shred Guard System stops the machine when large metal objects are accidentally inserted. An illuminated optical indicator warns the operator to remove these objects in order to protect the knives.



#### Chain Drive System

Sturdy steel gears and metal chain drive system which offer reliability and resistance to wear



**Touch Screen Panel:** just touch the controls to activate the machine functions. Keep your finger on the "Forward" control for 5 seconds and the machine functions continuously for 30 seconds when transparent material needs to be shredded.



**Automatic disconnection from the main power supply**  
 No longer any need to switch off the shredder before leaving the office. Maximum power saving.

Model	Article Code	Shred Type	Shred Size mm	Sheet Capacity* A4 70 gr	A4 80 gr	Security Level ISO/IEC 21964 (DIN 66399)	Shreddable Material	Automatic Oiler	Metal Detector	
Kobra 245 TS S5	99.892	straight cut	5,8	27-29	22-24	P-2 0-2 T-2 E-2			Option	
Kobra 245 TS S4	99.891	straight cut	3,8	25-27	20-22	P-2 0-2 T-2 E-2			Option	
Kobra 245 TS S4 SF Super Fast	99.902	straight cut	3,8	14-16	11-13	P-2 T-2 E-2				
Kobra 245 TS C4	99.894	cross cut	3,9 x 40	21-23	16-18	P-4 0-3 T-4 E-3 F-1		Option	Option	
Kobra 245 TS C2	99.893	cross cut	1,9 x 15	11-13	9-11	P-5 T-5 E-4 F-2		Option	Option	
Kobra 245 TS HS	99.895	high security cross-cut	0,8 x 9,5	6-8	5-6	P-6 T-6 F-3		Option	Option	
Kobra 245 TS HS-6	99.896	high security cross-cut	0,8 x 5	4-5	3-4	P-7 F-3		Option	Option	

\* Capacity may vary on power supply, paper quality and lubrication of cutting knives

Option	Code	Description	Available	
Automatic Oiler	Art. Code + <b>A0</b>	Automatically lubricates cutting knives	All cross-cut models	
Metal Detection System (Shred Guard)	Art. Code + <b>MD</b>	Detects metal presence to prevent damages to cutting knives	All models (excluding SF)	

# KOBRA 260 TS

## PROFESSIONAL TOUCH SCREEN MEDIUM OFFICE SHREDDERS

Shreds up to 30 sheets of paper at a time (A4 70gr), credit cards, CDs/DVDs, floppy disks and films (see model specifications)  
**60 liter cabinet** mounted on casters  
**Dimensions (WxDxH):** cm 40 x 36 x 80



Throat  
260 mm



Cabinet  
60 liters



Dimensions  
40x36x80cm



Continuous  
Duty motor

• **TOUCH SCREEN PANEL:** machine functions activated just by touching the icons on the control panel. Shreds transparent material by keeping the finger on the "Forward" control for 5 seconds.

• **TWO SEPARATE SETS OF CUTTING KNIVES** and two entry openings to separate the shredding of paper from CDs/DVDs/credit cards. Two distinct integrated removable bins to separate paper from plastic shreds.

• **SUPER POTENTIAL POWER SYSTEM:** heavy duty chain drive system with steel gears

• **24 HOUR CONTINUOUS DUTY MOTOR** without overheating and duty cycles. Motor thermal protection.

• **CARBON HARDENED STEEL CUTTING KNIVES** unaffected by staples and clips. High precision design of cutting knives allows high shred loads with low power consumption.

• **ENERGY SMART®:** power saving stand-by mode after just 8 seconds of non-operations

• **AUTOMATIC DISCONNECTION** from the main power supply after 4 hours, no need to switch-off the shredder before leaving the office

• **AUTOMATIC START & STOP:** automatic start and stop through electronic eyes

• **SAFETY STOP:** automatic stop at the door opening and/or full waste bags

• **AUTOMATIC REVERSE** in case of jamming

• **NSA EPL Listed** (HS-6 model)



### OPTIONS

#### AUTOMATIC OILER

Kobra TS cross-cut and High Security shredders can be equipped with an integrated automatic oiler, which activates a light signal when the oil bottle is low. This system eliminates the need of manual oiling of cutting knives.

#### METAL DETECTION SYSTEM (SHRED GUARD)

The Shred Guard System stops the machine when large metal objects are accidentally inserted. An illuminated optical indicator warns the operator to remove these objects in order to protect the knives.

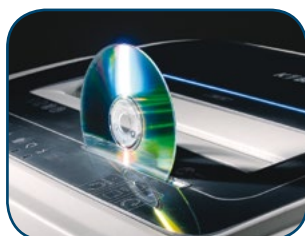
#### CD/DVD CUTTING UNIT

Dedicated cutting unit for CDs/DVDs/credit cards optional on HS and HS-6 models. Two distinct integrated removable bins to separate paper from plastic shreds.



**Chain Drive System**

Sturdy steel gears and metal chain drive system which offer reliability and resistance to wear



**Two separate sets of cutting knives**

Two entry openings and two sets of cutting knives to separate the shredding of paper from CDs/DVDs/credit cards. Two distinct integrated removable bins to separate paper from plastic shreds.



**Automatic Oiler:** integrated automatic oiling system to lubricate cutting knives (option on cross-cut models)

Model	Article Code	Shred Type	Shred Size mm	Sheet Capacity* A4 70 gr A4 80 gr	Security Level ISO/IEC 21964 (DIN 66399)	Shreddable Material	Automatic Oiler	Metal Detector	CD/DVD Cutting Unit	
Kobra 260 TS S5	99.805	III straight cut	5,8	28-30 23-25	P-2 0-2 T-2 E-2			Option	Included	
Kobra 260 TS S4	99.800	III straight cut	3,8	26-28 21-23	P-2 0-2 T-2 E-2			Option	Included	
Kobra 260 TS C4	99.815	III cross cut	3,9 x 40	22-24 17-19	P-4 0-3 T-4 E-3 F-1		Option	Option	Included	
Kobra 260 TS C2	99.810	III cross cut	1,9 x 15	12-14 10-12	P-5 T-5 E-4 F-2		Option	Option	Included	
Kobra 260 TS HS	99.820	III high security cross-cut	0,8 x 9,5	6-8 5-6	P-6 T-6 F-3		Option	Option	Option	
Kobra 260 TS HS-6	99.825	III high security cross-cut	0,8 x 5	4-5 3-4	P-7 F-3		Option	Option	Option	

\* Capacity may vary on power supply, paper quality and lubrication of cutting knives

Option	Code	Description	Available
Automatic Oiler	Art. Code + <b>AO</b>	Automatically lubricates cutting knives	All cross-cut models
Metal Detection System (Shred Guard)	Art. Code + <b>MD</b>	Detects metal presence to prevent damages to cutting knives	All models
CD/DVD Cutting Unit	Art. Code + <b>CD</b>	Separated cutting unit for CDs/DVDs/credit cards. Security level 0-1 T-2 E-2.	*Option on HS and HS-6 models



# KOBRA 270 TS

## PROFESSIONAL TOUCH SCREEN MEDIUM OFFICE SHREDDERS

Shreds up to 32 sheets of paper at a time (A4 70gr), credit cards, CDs/DVDs, floppy disks and films (see model specifications)

110 liter cabinet mounted on casters

Dimensions (WxDxH): cm 53 x 43 x 88



- **TOUCH SCREEN PANEL:** machine functions activated just by touching the icons on the control panel. Shreds transparent material by keeping the finger on the "Forward" control for 5 seconds.
- **TWO SEPARATE SETS OF CUTTING KNIVES** and two entry openings to separate the shredding of paper from CDs/DVDs/credit cards. Two distinct integrated removable bins to separate paper from plastic shreds.
- **SUPER POTENTIAL POWER SYSTEM:** heavy duty chain drive system with steel gears
- **24 HOUR CONTINUOUS DUTY MOTOR** without overheating and duty cycles. Motor thermal protection.
- **CARBON HARDENED STEEL CUTTING KNIVES** unaffected by staples and clips. High precision design of cutting knives allows high shred loads with low power consumption.
- **Electronic Power Control (EPC):** shows the shredding load required to optimize shredding without jams
- **ENERGY SMART®:** power saving stand-by mode after just 8 seconds of non-operation
- **AUTOMATIC DISCONNECTION** from the main power supply after 4 hours

- **AUTOMATIC START & STOP:** automatic start and stop through electronic eyes
- **SAFETY STOP:** automatic stop at the door opening and/or full waste bag
- **AUTOMATIC REVERSE** in case of jamming
- **NSA EPL Listed (HS-6 model)**



### OPTIONS

#### AUTOMATIC OILER

Kobra TS cross-cut and High Security shredders can be equipped with an integrated automatic oiler, which activates a light signal when the oil bottle is low. This system eliminates the need of manual oiling of cutting knives.

#### METAL DETECTION SYSTEM (SHRED GUARD)

The Shred Guard System stops the machine when large metal objects are accidentally inserted. An illuminated optical indicator warns the operator to remove these objects in order to protect the knives.

#### CD/DVD CUTTING UNIT

Dedicated cutting unit for CDs/DVDs/credit cards optional on HS and HS-6 models. Two distinct integrated removable bins to separate paper from plastic shreds.



Throat  
270 mm



Cabinet  
110 liters



Dimensions  
53x43x88cm

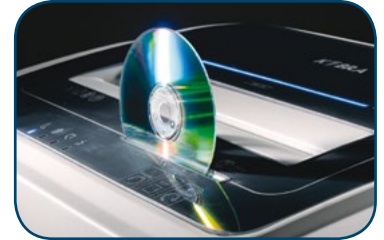


Continuous  
Duty motor



Chain Drive System

Sturdy steel gears and metal chain drive system which offer reliability and resistance to wear



Two separate sets of cutting knives

Two entry openings and two sets of cutting knives to separate the shredding of paper from CDs/DVDs/credit cards. Two distinct integrated removable bins to separate paper from plastic shreds.

Model	Article Code	Shred Type	Shred Size mm	Sheet Capacity* A4 70gr A4 80gr	Security Level ISO/IEC 21964 (DIN 66399)	Shreddable Material	Automatic Oiler	Metal Detector	CD/DVD Cutting Unit	
Kobra 270 TS S5	99.835	straight cut	5,8	30-32 24-26	P-2 0-2 T-2 E-2			Option	Included	
Kobra 270 TS S4	99.830	straight cut	3,8	27-29 22-24	P-2 0-2 T-2 E-2			Option	Included	
Kobra 270 TS C4	99.845	cross cut	3,9 x 40	23-25 18-20	P-4 0-3 T-4 E-3 F-1		Option	Option	Included	
Kobra 270 TS C2	99.840	cross cut	1,9 x 15	12-14 10-12	P-5 T-5 E-4 F-2		Option	Option	Included	
Kobra 270 TS HS	99.850	high security cross-cut	0,8 x 9,5	8-10 7-8	P-6 T-6 F-3		Option	Option	Option	
Kobra 270 TS HS-6	99.855	high security cross-cut	0,8 x 5	4-5 3-4	P-7 F-3		Option	Option	Option	

\* Capacity may vary on power supply, paper quality and lubrication of cutting knives

Option	Code	Description	Available
Automatic Oiler	Art. Code + <b>A0</b>	Automatically lubricates cutting knives	All cross-cut models
Metal Detection System (Shred Guard)	Art. Code + <b>MD</b>	Detects metal presence to prevent damages to cutting knives	All models
CD/DVD Cutting Unit	Art. Code + <b>CD</b>	Separated cutting unit for CDs/DVDs/credit cards. Security Level 0-1 T-2 E-2.	*Option on HS and HS-6 models

# KOBRA 310 TS

## PROFESSIONAL TOUCH SCREEN MEDIUM/LARGE OFFICE SHREDDERS

Shreds up to 47 sheets of paper at a time (A4 70gr), credit cards, CDs/DVDs, floppy disks and films (see model specs) - Auto-feeder capacity: up to 170 sheets of paper  
135 liter cabinet mounted on casters

Dimensions (WxDxH): cm 53 x 43 x 96 (+7 cm height with auto-feeder)



- **TOUCH SCREEN PANEL:** machine functions activated just by touching the icons on the control panel. Shreds transparent material by keeping the finger on the "Forward" control for 5 seconds.
- **TWO SEPARATE SETS OF CUTTING KNIVES** and two entry openings to separate the shredding of paper from CDs/DVDs/credit cards. Two distinct integrated removable bins to separate paper from plastic shreds (standard on SS4, SS5, CC2, CC4 models).
- **INCREASED POWER: DOUBLE MOTOR DRIVE TECHNOLOGY.** Heavy duty chain drive with steel gears.
- **24 HOUR CONTINUOUS DUTY MOTORS** without overheating and duty cycles. Motor thermal protection.
- **CARBON HARDENED STEEL CUTTING KNIVES** unaffected by staples and clips. High precision design of cutting knives allows high shred loads with low power consumption.
- **ELECTRONIC POWER CONTROL (EPC):** shows the shredding load required to optimize shredding without jams
- **ENERGY SMART®:** power saving stand-by mode after just 8 seconds of non-operation
- **AUTOMATIC DISCONNECTION** from the main power supply after 4 hours

- **AUTOMATIC OILER:** automatically lubricates cutting knives during the shredding operation, ensuring maximum reliability, efficiency and capacity (standard on HS and HS-6 models)
- **AUTOMATIC START & STOP:** automatic start and stop through electronic eyes
- **SAFETY STOP:** automatic stop at the door opening and/or full waste bag
- **AUTOMATIC REVERSE** in case of jamming
- **NSA EPL Listed** (HS-6 model)



### OPTIONS

**AUTOMATIC OILER:** automatically lubricates cutting knives (option on CC4 and CC2 models)

**AUTOMATIC FEEDER:** shred up to 170 sheets, whilst the operator can shred paper in the main throat and CDs/DVDs/credit cards through the dedicated cutting unit at the same time. Anti-jamming system in case the operator feeds the machine with crumpled or stapled paper.

**AUTO-FEED LOCKABLE COVER** to protect documents from prying eyes of unauthorized persons, equipped with security key

**CD/DVD CUTTING UNIT:** dedicated cutting unit for optical media shredding (HS and HS-6 models)



Throat  
310 mm



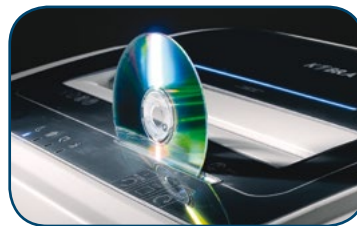
Cabinet  
135 liters



Dimensions  
53x43x96cm  
(+7 cm  
height with  
auto-feeder)



920 W  
24h  
Continuous  
Duty motor



Two separate sets of cutting knives  
Two entry openings and two sets of cutting knives to separate the shredding of paper from CDs/DVDs/credit cards



Automatic Feeder: shred up to 170 sheets whilst the operator can shred paper in the main throat and CDs/DVDs/credit cards through the dedicated cutting unit at the same time

Model	Article Code	Shred Type	Shred Size mm	Sheet Capacity* A4 70gr A4 80gr	Security Level ISO/IEC 21964 (DIN 66399)	Shreddable Material	Auto Oiler	Metal Det.	Auto Feeder	CD Cutting Unit
Kobra 310 TS SS5	99.865	straight cut	5,8	45-47 37-39	P-2 0-2 T-2 E-2			Option		Included
Kobra 310 TS SS4	99.860	straight cut	3,8	37-39 31-33	P-2 0-2 T-2 E-2			Option		Included
Kobra 310 TS CC4	99.875	cross cut	3,9 x 40	29-31 25-27	P-4 0-3 T-4 E-3 F-1		Option	Option	Option	Included
Kobra 310 TS CC2	99.870	cross cut	1,9 x 15	17-19 14-16	P-5 T-5 E-4 F-2		Option	Option	Option	Included
Kobra 310 TS HS	99.880	high security cross-cut	0,8 x 9,5	11-13 10-11	P-6 T-6 F-3		Included	Option	Option	Option
Kobra 310 TS HS-6	99.885	high security cross-cut	0,8 x 5	5-6 4-5	P-7 F-3		Included	Option	Option	Option

\* Capacity may vary on power supply, paper quality and lubrication of cutting knives

Option	Code	Description	Available
Automatic Oiler	Art. Code + <b>A0</b>	Automatically lubricates cutting knives	Option on CC2 and CC4 models
Metal Detection System (Shred Guard)	Art. Code + <b>MD</b>	Detects metal presence to prevent damages to cutting knives	All models without Automatic Feeder
Automatic Feeder	Art. Code + <b>AF</b>	Shreds automatically up to 170 sheets	Option on CC2, CC4, HS, HS-6 models
Lockable cover with security key	Art. Code + <b>LK</b>	Lockable cover with security key to protect documents to be shredded	All models with Automatic Feeder
CD/DVD Cutting Unit	Art. Code + <b>CD</b>	Separated cutting unit for CDs/DVDs/credit cards. Security Level 0-1 T-2 E-2.	*Option on HS and HS-6 models

# KOBRA 310 TS HD

## PROFESSIONAL TOUCH SCREEN HEAVY DUTY SHREDDERS

Shreds up to 56 sheets of paper at a time (A4 70gr) credit cards, CDs/DVDs, floppy disks, films and USB pen drives (see model specifications)

135 liter cabinet mounted on casters

Dimensions (WxDxH): cm 53 x 43 x 96



Throat  
310 mm



Cabinet  
135 liters



Dimensions  
53x43x96cm



Continuous  
Duty motor  
2600W  
24h

- **TOUCH SCREEN PANEL:** machine functions activated just by touching the icons on the control panel. Shreds transparent material by keeping the finger on the "Forward" control for 5 seconds.
- **SUPER POTENTIAL POWER SYSTEM:** heavy duty chain drive with steel gears
- **CONTINUOUS DUTY SHREDDING:** powerful 2600 Watt 24 hour continuous duty motor, no duty cycles or timed cool down periods. Motor thermal protection.
- **CARBON HARDENED STEEL CUTTING KNIVES** unaffected by staples and clips
- **ELECTRONIC POWER CONTROL:** EPC System displays real-time shredding load and helps the operator to optimize shredding efficiency without jams
- **ENERGY SMART®:** power saving stand-by mode after just 8 seconds of non-operation
- **AUTOMATIC DISCONNECTION** from the main power supply after 4 hours. No longer any need to switch off the shredder before leaving the office. Maximum power saving.
- **AUTOMATIC OILER:** automatically lubricates cutting knives during the shredding operation, ensuring maximum reliability, efficiency and capacity

- **AUTOMATIC START & STOP:** automatic start and stop through electronic eyes
- **SAFETY STOP:** automatic stop at the door opening and/or full waste bag
- **AUTOMATIC REVERSE** in case of jamming

### OPTIONS

#### METAL DETECTION SYSTEM (SHRED GUARD)

The Shred Guard System stops the machine when large metal objects are accidentally inserted. An illuminated optical indicator warns the operator to remove these objects in order to protect the knives.



**Easy to remove bag:** slide out tracks make it easy to empty the two waste collection bags



**Chain Drive System:** sturdy steel gears and metal chain drive system which offer reliability and resistance to wear



**Heavy duty:** shreds up to 56 sheets of paper at a time in cross-cut



**Automatic Oiler:** automatically lubricates cutting knives. 135 liter quality cabinet equipped with a dedicated oil container holder.

Model	Article Code	Shred Type	Shred Size mm	Sheet Capacity* A4 70gr A4 80gr	Security Level ISO/IEC 21964 [DIN 66399]	Shreddable Material	Automatic Oiler	Metal Detector	
Kobra 310 TS HD C4	99.905	III cross cut	3,9 x 40	54-56 48-50	P-4 0-3 T-4 E-3 F-1		Included	Option	
Kobra 310 TS HD C2	99.904	III cross cut	1,9 x 15	30-32 27-29	P-5 0-4 T-5 E-4 F-2		Included	Option	
Kobra 310 TS HD HS	99.906	III high security cross-cut	0,8 x 9,5	20-22 18-20	P-6 0-5 T-6 E-5 F-3		Included	Option	
Kobra 310 TS HD HS-6	99.907	III high security cross-cut	1 x 5	12 10	P-7 F-3		Included	Option	

\* Capacity may vary on power supply, paper quality and lubrication of cutting knives

Option	Code	Description	Available
Metal Detection System (Shred Guard)	Art. Code + MD	Detects metal presence to prevent damages to cutting knives	All models



# KOBRA 410 TS

## PROFESSIONAL TOUCH SCREEN HEAVY DUTY SHREDDERS

Shreds up to 72 sheets of paper at a time (A4 70gr) credit cards, CDs/DVDs, floppy disks, films and USB pen drives (see model specifications)  
**205 liter cabinet** mounted on casters  
**Dimensions** (WxDxH): cm 60 x 48 x 104



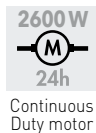
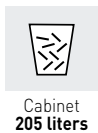
- **TOUCH SCREEN PANEL:** machine functions activated just by touching the icons on the control panel. Shreds transparent material by keeping the finger on the "Forward" control for 5 seconds.
- **SUPER POTENTIAL POWER SYSTEM:** heavy duty chain drive with steel gears
- **CONTINUOUS DUTY SHREDDING:** powerful 2600 Watt 24 hour continuous duty motor, no duty cycles or timed cool down periods. Motor thermal protection.
- **CARBON HARDENED STEEL CUTTING KNIVES** unaffected by staples and clips
- **ELECTRONIC POWER CONTROL:** EPC System displays real-time shredding load and helps the operator to optimize shredding efficiency without jams
- **ENERGY SMART®:** power saving stand-by mode after just 8 seconds of non-operation
- **AUTOMATIC DISCONNECTION** from the main power supply after 4 hours

- **AUTOMATIC OILER:** automatically lubricates cutting knives during the shredding operation, ensuring maximum reliability, efficiency and capacity
- **AUTOMATIC START & STOP:** automatic start and stop through electronic eyes
- **SAFETY STOP:** automatic stop at the door opening and/or full waste bag
- **AUTOMATIC REVERSE** in case of jamming

### OPTIONS

**CD/DVD CUTTING UNIT:** two entry openings and two sets of cutting knives to separate the shredding of paper from CDs/DVDs/floppy disks/credit cards. Two distinct integrated bins to separate shredded materials.

**METAL DETECTION SYSTEM (SHRED GUARD).** The Shred Guard System stops the machine when large metal objects are accidentally inserted. An illuminated optical indicator warns the operator to remove these objects in order to protect the knives.



**Automatic Oiler:** automatically lubricates cutting knives. Sturdy and large volume 205 liter steel cabinet equipped with a dedicated oil container holder. Standard on cross-cut models.



**Option of two separate cutting knives**  
 (see model specifications)

Two entry openings and two sets of cutting knives are optional on every model to separate the shredding of paper from CDs/DVDs/floppy-disks/credit cards. Two bins to separate shredded material.

Model	Article Code	Shred Type	Shred Size mm	Sheet Capacity* A4 70gr A4 80gr	Security Level ISO/IEC 21964 (DIN 66399)	Shreddable Material	Automatic Oiler	Metal Detector	CD/DVD Cutting Unit	
Kobra 410 TS S5	99.887	straight cut	5,8	68-72 60-64	P-2 O-2 T-2 E-2			Option	CD Option	
Kobra 410 TS C4	99.886	cross cut	3,9 x 40	54-56 48-50	P-4 O-3 T-4 E-3 F-1		Included	Option	CD Option	
Kobra 410 TS C2	99.888	cross cut	1,9 x 15	30-32 27-29	P-5 O-4 T-5 E-4 F-2		Included	Option	CD Option	
Kobra 410 TS HS	99.889	high security cross-cut	0,8 x 9,5	20-22 18-20	P-6 T-6 F-3		Included	Option	CD HS Option	
Kobra 410 TS HS-6	99.890	high security cross-cut	1 x 5	12 10	P-7 F-3		Included	Option	CD HS Option	

\* Capacity may vary on power supply, paper quality and lubrication of cutting knives

Option	Code	Description	Available
Metal Detection System (Shred Guard)	Art. Code + MD	Detects metal presence to prevent damages to cutting knives	All models
CD/DVD cutting unit	Art. Code + CD	Separated cutting unit for CDs/DVDs/floppy-disks/credit cards. 3,2x50 mm cross-cut. Security Level O-3 T-4 E-3.	Option on S5, C4, C2 models
High Security CD/DVD cutting unit	Art. Code + CD HS	Separated cutting unit for CDs/DVDs/floppy-disks/credit cards. 1,5x2 mm cross-cut. Security Level O-6 T-6 E-5.	*Option on HS and HS-6 models

# KOBRA 430 TS

## TOUCH SCREEN INDUSTRIAL SHREDDER WITH CONVEYOR BELT

Shreds up to 130 sheets of paper at a time (A4 70gr), credit cards, CDs/DVDs, floppy disks and USB pen drives

470 liter adjustable removable trolley

Dimensions (WxDxH): cm 81 x 161 x 170



- **CONVEYOR BELT**  
for easy feeding of material to shred
- **TOUCH SCREEN PANEL:** machine functions activated just by touching the icons on the control panel
- **SUPER POTENTIAL POWER SYSTEM:**  
heavy duty chain drive with steel gears
- **CONTINUOUS DUTY SHREDDING:** powerful 4000 Watt 24 hour continuous duty motor, no duty cycles or timed cool down periods. Motor thermal protection.
- **CARBON HARDENED CUTTING KNIVES**  
unaffected by staples and clips
- **AUTOMATIC OILER**  
automatically lubricates cutting knives during the shredding operation, ensuring maximum reliability, efficiency and capacity
- **SAFETY STOP:** automatically stops at the door opening and/or full waste bag
- **AUTOMATIC REVERSE** in case of jamming



Throat  
430 mm



Cabinet  
470 liters



Dimensions  
81x161x170cm



4000 W  
24h  
Continuous  
Duty motor



**Conveyor Belt** for easy feeding of material to shred



**Touch Screen Panel:** machine functions activated just by touching the icons on the control panel



**470 liter removable adjustable trolley** accommodating one bag of 470 liters or two bags of 235 liters



**Automatic Oiler:** automatically lubricates cutting knives. Sturdy and large volume 470 liter steel cabinet equipped with a dedicated oil container holder.

Model	Article Code	Shred Type	Shred Size mm	Sheet Capacity*		Security Level ISO/IEC 21964 (DIN 66399)	Shreddable Material	Automatic Oiler	
				A4 70gr	A4 80gr				
Kobra 430 TS C4	99.901	III cross cut	5,8 x 50	125-130	100-105	P-3 0-2 T-3 E-2 F-1		Included	
Kobra 430 TS C2	99.943	III cross cut	1,9 x 15	60-65	50-55	P-5 0-4 T-5 E-4 F-2		Included	

\* Capacity may vary on power supply, paper quality and lubrication of cutting knives

# Classic Line - Main Features

The highest shredding and security performances with the widest choice ever of shredding solutions



## SUPER POTENTIAL POWER SYSTEM

The power with the force and durability of the steel

Drive system for many years of trouble and service free operation. Special carbon hardened steel gears and metal chain drive systems **ensure operational reliability and resistance to stress** and mis-use, unmatched by the more economical and common transmissions made of plastic gears which are found in most products on the market.

## 24 HOUR CONTINUOUS DUTY MOTORS

No overheating

KOBRA shredders are equipped with 24 hour continuous duty motors for long shredding operations without duty cycle. KOBRA shredders can be operated for any length of time without interruptions for overheating. **KOBRA shredders deliver the maximum daily shredding capacity.**

## ENERGY SMART®

Power Saving Stand-by Mode

Save energy and protect the environment

Available exclusively on the KOBRA range of shredders, ENERGY SMART® saves energy and protects the environment by reducing emissions responsible for the Global Warming. The energy consumption of a KOBRA shredder is managed by **a dedicated software activating the power saving stand-by mode** and making sure that no more electrical energy is drained from the power source.





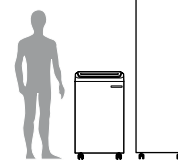


## AUTO-FEED/AUTO-COMPACT OIL-FREE SHREDDER

Exclusive high speed **automatic autofeed system** for the shredding of large volumes of documents. The automatic feed system allows walk-away shredding of large quantities of documents (up to 350 sheet paper tray). The **automatic paper compacting system** reduces the volume of shredded paper by 4 times to optimize bag capacity and avoid frequent emptyings.

*Increase by 4 times to 600 liters the size of your cabinet with the Kobra Auto-Compact cutting edge technology.*

**NEW**



## Hybrid POWER MANAGEMENT SYSTEM

Experience tomorrow's environmentally friendly technology today

HYBRID technology utilizes stored energy during each and every shredding cycle to improve efficiency, performance and to disconnect the machine from power supply. **Shreds up to 15% of documents using stored energy.**



## DOUBLE WASTE BIN

Some KOBRA Models feature a **special removable double waste bin**. This specially designed waste bin allows the separation of shredded paper from plastic shreds of CDs, DVDs and credit cards. This feature assists the users by ensuring that they can properly recycle their shredded materials.

## TURBO BOOST SYSTEM

By pressing the **Turbo button** located on the top cover, the cutting capacity of the machine is temporarily **increased by 30%**. In case of a paper jam, the Turbo Boost is all you need to clear it. The bright Turbo light indicates reactivation of the Turbo Boost after each use. **KOBRA "Turbo Boost" shredders feature unbelievable shredding power up to 52 sheets of paper in one pass.**



## THROW AND SHRED SYSTEM

### 2 cutting systems - 3 shredding functions

Thanks to the revolutionary new **"Throw and Shred" System** and its automatic feeding mechanism, you can now choose how to shred your documents or other types of media. You can choose standard shredding, by inserting the paper into the throat of the shredder (1), use the dedicated DVD, CD-Rom and Credit Card Throat (2), or the Throw and Shred System, destroying your crumpled paper (3).



## Classic Line - Options

Choose the options to customize your shredder and make it perfect to meet your shredding needs



**Art. Code +AO**

**INTEGRATED AUTOMATIC OILER:**  
automatically lubricates cutting knives

Option on:  
Kobra 390 C4,  
Kobra 400 C4 and C2.

Standard on:  
Kobra AF.1 C2,  
Kobra 400 HS and HS-6,  
Kobra 400 HS OM and 400 COMBI.



**Art. Code +MD**

**METAL DETECTION SYSTEM (SHRED GUARD):** detects metal presence to prevent damages to cutting knives

Option on:  
Kobra 390  
Kobra 400  
Kobra 400 COMBI.



**Code 99.017**

**EXTERNAL AUTOMATIC OILER (ACCU-FLOW):** automatically lubricates cutting knives

Option on cross-cut models:  
Kobra 260,  
Kobra 300,  
Kobra 260 HS/2 and HS/2-6.



**Art. Code +CLK**

**ELECTRONIC COMBINATION LOCK** to protect documents from unauthorized persons while shredding

Option on:  
AF.1 C4, AF.1 C2, AF.2 COMPACTOR.



**Code 99.001**

**DOCUMENT SHELF:** document top-shelf to save office space

Available on:  
Kobra 260 HS/2 and HS/2-6.



**Code 99.003**

**DOCUMENT SHELF:** document top-shelf to save office space

Option on:  
Kobra 390,  
Kobra 400.



# KOBRA AF+1

## CLASSIC LINE - PROFESSIONAL SHREDDER WITH AUTOMATIC FEEDER



Shreds up to 350 sheets (auto-feed)

Shreds up to 12 sheets at a time (manual feed), credit cards and films

40/60 liter cabinet mounted on casters

Dimensions (WxDxH): cm 39 x 36 x 83 (60 liter cabinet) • cm 39 x 36 x 64 (40 liter cabinet)

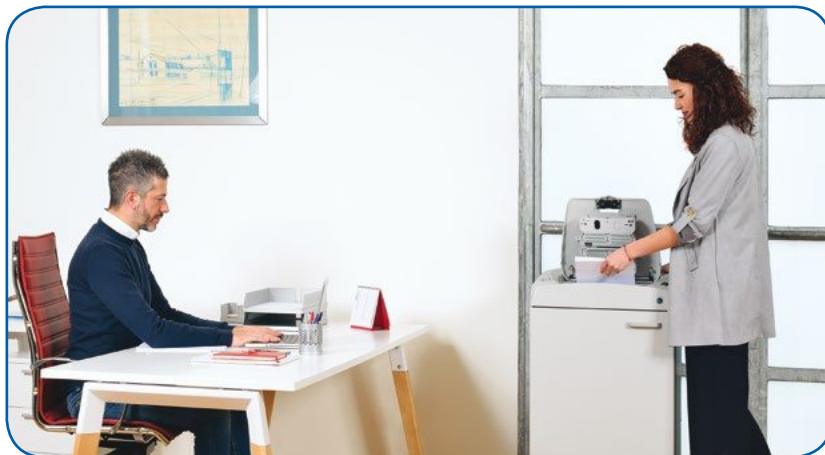
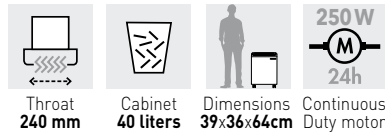
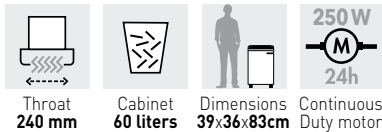


AF+1 60 liter



AF+1 40 liter

- **LARGE AUTO-FEED PAPER TRAY** up to 350 sheets
- **SHREDDING SPEED** 13 sheets per minute
- **SPECIAL AUTO-FEED SYSTEM**
- **EXCLUSIVE OIL-FREE SYSTEM** no need of lubrication and maintenance of cutting knives
- **24 HOUR CONTINUOUS DUTY MOTOR** without overheating and duty cycles
- **CARBON HARDENED** steel cutting knives
- **ENERGY SMART®** power saving stand-by mode just after 12 seconds of non-operation
- **AUTOMATIC START & STOP** through electronic eyes with stand-by function
- **SAFETY STOP:** automatic stop with light signal for bag full and/or open door
- **AUTOMATIC REVERSE SYSTEM** in case of jamming



The AF+1 Automatic Feeder with a convenient paper tray allows walk-away shredding of large quantities of documents



Large Auto-Feed Paper Tray: up to 350 sheets

Model	Article Code	Shred Type	Shred Size mm	Sheet Capacity* Automatic Feed		Sheet Capacity* Manual Feed		Security Level ISO/IEC 21964 (DIN 66399)	Shreddable Material	
				A4 70gr	A4 80gr	A4 70gr	A4 80gr			
Kobra AF+1 40 liters	99.935	cross cut	3,5 x 40	350	300	10-12	9-11	P-4 T-4 E-3 F-1		
Kobra AF+1 60 liters	99.936	cross cut	3,5 x 40	350	300	10-12	9-11	P-4 T-4 E-3 F-1		

\* Capacity may vary on power supply, paper quality and lubrication of cutting knives



# KOBRA AF.1

## CLASSIC LINE - PROFESSIONAL SHREDDER WITH AUTOMATIC FEEDER



Shreds up to 350 sheets (auto-feed)

Shreds up to 12 sheets at a time (manual feed), credit cards and films

135 liter cabinet mounted on casters

Dimensions (WxDxH): cm 53 x 43 x 98



### KOBRA AF.1 C4 Auto-Feed Shredder is the fastest automatic shredder available in the global market

Its incredible 37 sheet per minute speed allows walk-away fast shredding of large quantities of documents

- **LARGE AUTO-FEED PAPER TRAY** up to 350 sheets
- **HIGH SHREDDING SPEED:** 37 sheets per minute
- **SPECIAL AUTO FEED SYSTEM**
- **EXCLUSIVE OIL-FREE SYSTEM** no need of lubrication and maintenance of cutting blades (AF.1 C4)
- **AUTOMATIC OILER** automatically lubricates the cutting knives (AF.1 C2)
- **SUPER POTENTIAL POWER SYSTEM:** heavy duty chain drive with metal gears
- **24 HOUR CONTINUOUS DUTY MOTOR** without overheating and duty cycles
- **CARBON HARDENED** steel cutting knives
- **ENERGY SMART®** power saving stand-by mode just after 8 seconds of non-operation
- **AUTOMATIC START & STOP** through electronic eyes with stand-by function
- **SAFETY STOP:** automatic stop with light signal for bag full and/or open door
- **AUTOMATIC REVERSE SYSTEM** in case of jamming
- **LARGE 135 LITER CABINET** to avoid frequent emptyings



Throat  
260 mm



Cabinet  
135 liters



Dimensions  
53x43x98cm



600 W  
24h  
Continuous  
Duty motor

### OPTION

**ELECTRONIC COMBINATION LOCK** to protect document from prying eyes of unauthorized persons while shredding



The automatic Auto-Feed System and the convenient paper tray allow walk-away shredding of large quantities of documents



**Large Auto-Feed Paper Tray:**  
up to 350 sheets



**Electronic Combination Lock (Option)**  
Protects documents from prying eyes of unauthorized persons while shredding

Model	Article Code	Shred Type	Shred Size mm	Sheet Capacity* Automatic Feed		Sheet Capacity* Manual Feed		Security Level ISO/IEC 21964 (DIN 66399)	Shreddable Material	
				A4 70gr	A4 80gr	A4 70gr	A4 80gr			
<b>Kobra AF.1 C4</b> (Oil-free)	99.934	III cross cut	3,9 x 40	350	300	10-12	9-11	<b>P-4</b> T-4 E-3 F-1		
<b>Kobra AF.1 C2</b> (Auto-Oiler)	99.937	III cross cut	1,9 x 15	350	300	7-8	6-7	<b>P-5</b> T-5 E-4 F-2		

\* Capacity may vary on power supply, paper quality and lubrication of cutting knives

Option	Code	Description	Available
Electronic combination lock	Art. Code + <b>CLK</b>	Protects documents from prying eyes of unauthorized persons while shredding.	All models

# KOBRA AF.2 COMPACTOR

CLASSIC LINE - PROFESSIONAL AUTO-FEED/AUTO-COMPACT SHREDDER

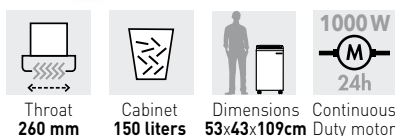


Shreds up to 400 sheets (auto-feed)

Shreds up to 12 sheets at a time (manual feed), credit cards and films

150 liter cabinet equipped with special compacting system. Mounted on casters.

Dimensions (WxDxH): cm 53 x 43 x 109



Large Auto-Feed Paper Tray: up to 400 sheets with Electronic Combination Lock (Option)

## KOBRA AF.2 Auto-Feed/Auto-Compact Shredder is the most innovative and fastest automatic shredder available in the global market

Its incredible 37 sheet per minute speed allows walk-away fast shredding of large quantities of documents

**New**

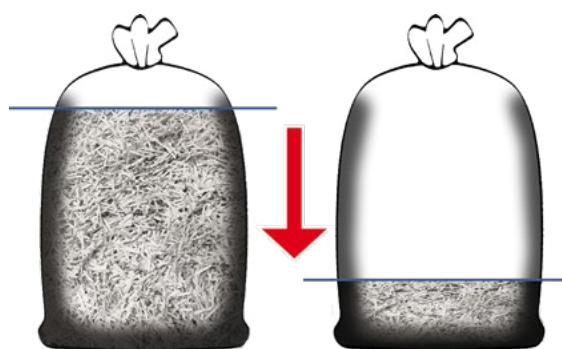
The special paper compacting system optimizes bag capacity and avoids frequent emptyings, increasing by 4 times to 600 liters the size of the cabinet

- **LARGE AUTO-FEED PAPER TRAY** up to 400 sheets
- **HIGH SHREDDING SPEED:** 37 sheets/min
- **SPECIAL AUTO FEED SYSTEM**
- **INTEGRATED AUTOMATIC COMPACTOR** TO REDUCE THE VOLUME OF SHREDDED PAPER BY 4 TIMES to optimize bin capacity and avoid frequent emptyings of the bag
- **COMPACTING PAPER INCREASES SHREDDING SECURITY OF ONE LEVEL**
- **EXCLUSIVE OIL-FREE SYSTEM:** no need of lubrication and maintenance of cutting blades
- **SUPER POTENTIAL POWER SYSTEM:** heavy duty chain drive with metal gears
- **24 HOUR CONTINUOUS DUTY MOTOR**
- without overheating and duty cycles
- **CARBON HARDENED** steel cutting knives
- **ENERGY SMART®** power saving stand-by mode just after 8 seconds of non-operation
- **AUTOMATIC START & STOP** through electronic eyes with stand-by function
- **SAFETY STOP:** automatic stop with light signal for bag full and/or open door
- **AUTOMATIC REVERSE SYSTEM** in case of jamming

### OPTION

**ELECTRONIC COMBINATION LOCK** to protect document from unauthorized persons while shredding

**New**



**Integrated Automatic Compactor:** reduces the volume of shredded paper by 4 times to optimize bag capacity and avoid frequent emptyings. Compacting paper increases shredding security of one level.

Model	Article Code	Shred Type	Shred Size mm	Sheet Capacity* Automatic Feed		Sheet Capacity* Manual Feed		Security Level ISO/IEC 21964 (DIN 66399)	Shreddable Material	
				A4 70gr	A4 80gr	A4 70gr	A4 80gr			
Kobra AF.2 COMPACTOR	99.944	III cross cut	3,9 x 40	400	350	10-12	9-11	P-4 T-4 E-3 F-1		

\* Capacity may vary on power supply, paper quality and lubrication of cutting knives

Option	Code	Description	Available
Electronic combination lock	Art. Code + CLK	Protects documents from prying eyes of unauthorized persons while shredding.	All models



Shreds up to **14 sheets** of paper at a time (A4 70gr), credit cards and films

**30 liter** waste bin with transparent window to check the shreds level

**Dimensions** (WxDxH): cm 37 x 26 x 50



- **EXCLUSIVE HYBRID TECHNOLOGY** utilizes stored energy for saving power
- **24 HOUR CONTINUOUS DUTY MOTOR** without overheating and duty cycles. Motor thermal protection.
- **CARBON HARDENED** steel cutting knives, accepts staples and clips
- **ZERO CONSUMPTION** in stand-by mode
- **AUTOMATIC START & STOP:** automatically starts at material insertion
- **SAFETY STOP:** automatically stops during emptying of waste bin
- **ENVIRONMENTALLY FRIENDLY:** does not require plastic bags
- Convenient **TRANSPARENT WINDOW** to check the shreds level
- **LED ILLUMINATED** waste bin (Hybrid-S)



Throat  
230 mm



Waste Bin  
30 liters



Dimensions  
37x26x50cm



**170 W**  
24h  
**HYBRID**  
Continuous  
Duty motor



**250 W**  
24h  
**HYBRID-S**  
Continuous  
Duty motor

**Shreds up to 15%  
of documents  
using stored energy**

Hybrid technology utilizes energy stored during each shredding cycle, disconnecting the machine from power supply



Kobra Hybrid-S shreds up to 14 sheets at a time.  
Led illuminated waste bin.



Power Management illuminated **green led indicators**.  
Automatic Start & Stop at material insertion.

Model	Article Code	Shred Type	Shred Size mm	Sheet Capacity*		Security Level ISO/IEC 21964 (DIN 66399)	Shreddable Material	
				A4 70gr	A4 80gr			
<b>Kobra Hybrid</b>	99.941	III cross cut	3,5 x 40	8-9	7-8	<b>P-4</b> T-4 E-3 F-1		
<b>Kobra Hybrid-S</b>	99.942	III cross cut	3,5 x 40	12-14	10-12	<b>P-4</b> T-4 E-3 F-1		

\* Capacity may vary on power supply, paper quality and lubrication of cutting knives



# KOBRA C1

## CLASSIC LINE PERSONAL AND DESKSIDE SHREDDER



**Shreds up to 9 sheets** of paper at a time (A4 70gr), credit cards and films  
**18 liter** waste bin with transparent window to check the shreds level.  
**Dimensions** (WxDxH): cm 34 x 20 x 50



- Specially built with no electronic components to handle the heaviest shredding load
- **24 HOUR CONTINUOUS DUTY MOTOR** without overheating and duty cycles. Motor thermal protection.
- **CARBON HARDENED STEEL CUTTING KNIVES**, accept staples and clips
- **ZERO CONSUMPTION** in stand-by mode
- **AUTOMATIC START & STOP**: automatically starts at material insertion
- **ENVIRONMENTALLY FRIENDLY**: does not require plastic bags



Stand-by, Stop and Reverse Switch.  
Zero consumption in stand-by mode.



Throat  
230 mm



Waste Bin  
18 liters



Dimensions  
34x20x50cm



Continuous  
Duty motor  
170 W  
24h

Model	Article Code	Shred Type	Shred Size mm	Sheet Capacity*		Security Level ISO/IEC 21964 (DIN 66399)	Shreddable Material
Kobra C1	99.320	III cross cut	3,5 x 40	A4 70gr	A4 80gr	P-4 T-4 E-3 F-1	

\* Capacity may vary on power supply, paper quality and lubrication of cutting knives

# KOBRA +1

## CLASSIC LINE PERSONAL AND DESKSIDE SHREDDERS



**Shreds up to 27 sheets** of paper at a time (A4 70gr), CDs/DVDs, credit cards and films (see model specifications)  
**38,5 liter** waste bin with transparent window to check the shreds level  
**Dimensions** (WxDxH): cm 39 x 30 x 59



- **24 HOUR CONTINUOUS DUTY MOTOR** without overheating and duty cycles. Motor thermal protection.
- **CARBON HARDENED STEEL CUTTING KNIVES**, accept staples and clips
- **ENERGY SMART®** power saving stand-by mode
- **AUTOMATIC START & STOP**: automatic start and stop through electronic eyes with stand-by function
- **SAFETY STOP**: automatically stops at bin removal and/or full waste bin
- **AUTOMATIC REVERSE** in case of jamming
- **ENVIRONMENTALLY FRIENDLY**: does not require plastic bags



Removable waste bin does not require lifting of the cutting head. Easy emptying operations.



Throat  
230 mm



Waste Bin  
38,5 liters



Dimensions  
39x30x59cm



Continuous  
Duty motor  
250 W  
24h

Model	Article Code	Shred Type	Shred Size mm	Sheet Capacity*		Security Level ISO/IEC 21964 (DIN 66399)	Shreddable Material
Kobra+1 SS7	99.104	III straight cut	7,5	25-27	22-24	P-1 O-1 T-2 E-2	
Kobra+1 SS6	99.102	III straight cut	5,8	23-25	20-22	P-2 O-2 T-2 E-2	
Kobra+1 SS4	99.103	III straight cut	3,8	17-19	15-17	P-2 O-2 T-2 E-2	
Kobra+1 CC4	99.105	III cross cut	3,5 x 40	12-14	10-12	P-4 T-4 E-3 F-1	

\* Capacity may vary on power supply, paper quality and lubrication of cutting knives

# KOBRA +2 and KOBRA +3

## CLASSIC LINE PERSONAL AND DESKSIDE SHREDDERS - DOUBLE SET OF CUTTING KNIVES



Shreds up to 27 sheets of paper at a time (A4 70gr), CDs/DVDs, credit cards and films (see model specifications)  
 38,5 liter (for paper) +1,5 liter (for plastic) removable integrated waste bins with transparent window to check the shreds level  
 Dimensions (WxDxH): cm 39 x 30 x 59



### 2 SHREDDER FUNCTIONS (KOBRA+2):

- standard paper entry
- dedicated entry for CDs/DVDs/credit cards

### 3 SHREDDER FUNCTIONS (KOBRA+3):

- standard paper entry
- dedicated entry for CDs/DVDs/credit cards
- crumpled paper shredding

### THROW AND SHRED SYSTEM (KOBRA+3):

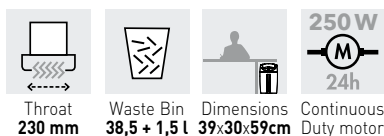
special system with automatic feeder to shred crumpled paper

- **24 HOUR CONTINUOUS DUTY MOTOR** without overheating and duty cycles. Motor thermal protection.
- **CARBON HARDENED STEEL CUTTING KNIVES**, accept staples and clips
- **TWO SEPARATE SETS OF CUTTING KNIVES:** one for paper and one for CDs/DVDs, credit cards
- **ENERGY SMART®** power saving stand-by mode
- **AUTOMATIC START & STOP** through electronic eyes with stand-by function
- **SAFETY STOP:** automatically stops at bin removal and/or full waste bin
- **AUTOMATIC REVERSE SYSTEM** in case of jamming

- **OPENING LID** with suspension closing and mobile protection system. Safety System equipped with dual electronic sensors which automatically cut off the machine when lid is lifted up.
- **TWO SEPARATE INTEGRATED BINS:** removable bins to separate shredded paper and plastic. Does not require lifting of the cutting head.
- **ECO-FRIENDLY:** no need for plastic bags



Removable waste bin does not require lifting of the cutting head. Easy emptying operations.



1. Standard paper entry (Kobra+2, Kobra +3)



2. CDs/DVDs and credit cards dedicated entry. **Separate set of cutting knives** (Kobra+2, Kobra +3)



3. **Throw and Shred System** for crumpled paper (Kobra +3)

Model	Article Code	Shred Type	Shred Size mm	Sheet Capacity*		Security Level ISO/IEC 21964 (DIN 66399)	Shreddable Material	
				A4 70gr	A4 80gr			
Kobra+2 SS7	99.111	straight cut	7,5	25-27	22-24	P-1 0-2 T-2 E-2	**	
Kobra+2 SS4	99.108	straight cut	3,8	17-19	15-17	P-2 0-2 T-2 E-2	**	
Kobra+2 CC2	99.112	cross cut	1,9 x 13	7-8	5-7	P-5 T-5 E-4 F-2	**	
Model	Article Code	Shred Type	Shred Size mm	Sheet Capacity*		Security Level ISO/IEC 21964 (DIN 66399)	Shreddable Material	
				A4 70gr	A4 80gr			
Kobra+3 CC4	99.110	cross cut	3,5 x 40	12-14	10-12	P-4 T-4 E-3 F-1	**	

\* Capacity may vary on power supply, paper quality and lubrication of cutting knives.

\*\* CD/DVD Cutting Unit: standard separate cutting unit. Security Level 0-1 T-2 E-2.

# KOBRA 240.1

## CLASSIC LINE SMALL/MEDIUM OFFICE PROFESSIONAL SHREDDERS



Shreds up to 31 sheets of paper at a time (A4 70gr), CDs/DVDs, credit cards, floppy-disks and films (see model specifications)

40 liter cabinet mounted on casters

Dimensions (WxDxH): cm 40 x 36 x 64



- **SUPER POTENTIAL POWER SYSTEM:** heavy duty chain drive with metal gears
- **24 HOUR CONTINUOUS DUTY MOTOR** without overheating and duty cycles. Motor thermal protection.
- **CARBON HARDENED STEEL CUTTING KNIVES** unaffected by staples and clips
- **ENERGY SMART®** power saving stand-by mode after just 8 seconds of no-operation
- **AUTOMATIC START & STOP** through electronic eyes with stand-by function. Integrated flap for CD/DVD, floppy-disk and credit card shredding.
- **SAFETY STOP:** automatic stop with light signal for bag full and/or open door
- **AUTOMATIC REVERSE SYSTEM** in case of jamming
- **EASY TO OPERATE:** On-Off-Reverse switch
- **40 LITER CABINET** mounted on casters



Throat  
240 mm



Cabinet  
40 liters



Dimensions  
40x36x64cm



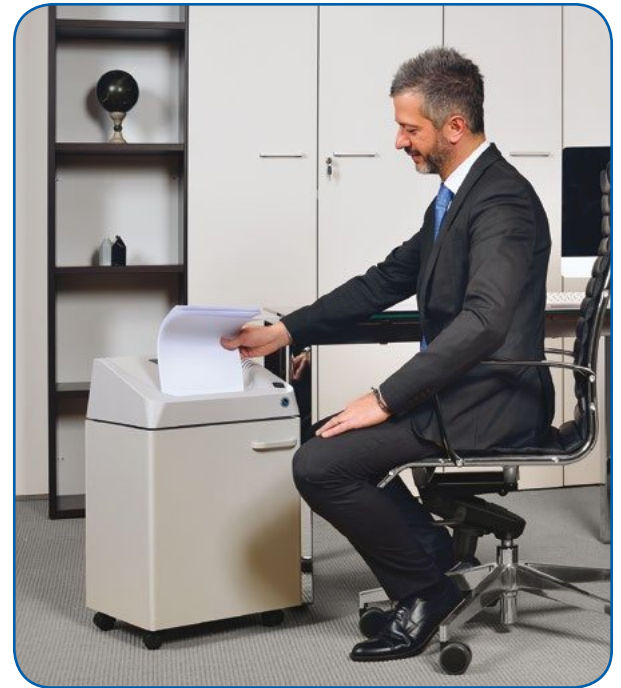
Continuous  
Duty motor



ENERGY SMART® management system  
with illuminated indicators for zero power  
consumption in stand-by mode



Heavy duty chain drive  
with steel gears



Shreds up to 31 sheets of paper at a time.  
Attractive 40 liter cabinet mounted on casters.

Model	Article Code	Shred Type	Shred Size mm	Sheet Capacity*		Security Level ISO/IEC 21964 (DIN 66399)	Shreddable Material	
				A4 70 gr	A4 80 gr			
Kobra 240.1 S5	99.910	straight cut	5,8	29-31	25-27	P-2 0-2 T-2 E-2		
Kobra 240.1 S4	99.909	straight cut	3,8	24-26	20-22	P-2 0-2 T-2 E-2		
Kobra 240.1 S2	99.908	straight cut	1,9	13-15	11-13	P-3 T-3 E-2		
Kobra 240.1 C4	99.912	cross cut	3,5 x 30	15-17	13-15	P-4 0-3 T-4 E-3 F-1		
Kobra240.1 C2	99.911	cross cut	1,9 x 15	10-12	9-11	P-5 T-5 E-4 F-2		
Kobra 240.1 HS	99.913	high security cross-cut	0,8 x 9,5	6-8	5-6	P-6 T-6 F-3		
Kobra 240.1 HS-6	99.914	high security cross-cut	0,8 x 5	4-5	3-4	P-7 F-3		

\* Capacity may vary on power supply, paper quality and lubrication of cutting knives

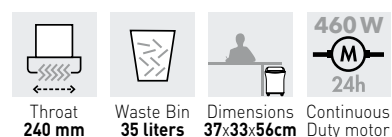
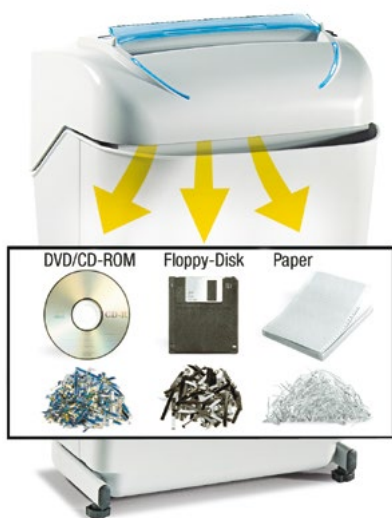


# KOBRA 240 and KOBRA 240 Turbo

## CLASSIC LINE SMALL/MEDIUM OFFICE PROFESSIONAL SHREDDERS



**Shreds up to 52 sheets** of paper at a time (A4 70gr), CDs/DVDs, credit cards, floppy-disks and films (see model specifications)  
**35 liter** removable waste bin, does not require lifting of the cutting head  
**Dimensions** (WxDxH): cm 37 x 33 x 56



- **TURBO BOOST** for extra-shredding capacity: by pressing the Turbo switch the shredding capacity is increased by 30% (KOBRA 240 TURBO models)
- **SUPER POTENTIAL POWER SYSTEM:** heavy duty chain drive with metal gears
- **24 HOUR CONTINUOUS DUTY MOTOR** without overheating. Motor thermal protection.
- **CARBON HARDENED STEEL CUTTING KNIVES** unaffected by staples and clips
- **ENERGY SMART®** power saving stand-by mode
- **AUTOMATIC START & STOP** through electronic eyes with stand-by function
- **SAFETY STOP:** automatic stop at bin removal and/or full waste bin
- **REMOVABLE BIN:** does not require lifting of the cutting head
- **ECO-FRIENDLY** does not require plastic bags
- **NSA EPL Listed** (HS-6 model)



**Turbo Boost:** press the button to activate the extra-shredding capacity



**Removable Eco-Friendly waste bin:** does not require lifting of the cutting head (plastic bags not required). Can separate shredded paper from plastic shreds.

Model	Article Code	Shred Type	Shred Size mm	Sheet Capacity*		Security Level ISO/IEC 21964 (DIN 66399)	Shreddable Material	
Kobra 240 SS5	99.721	straight cut	5,8	27-29	22-24	P-2 0-2 T-2 E-2		
Kobra 240 SS4	99.706	straight cut	3,8	24-26	20-22	P-2 0-2 T-2 E-2		
Kobra 240 SS2	99.761	straight cut	1,9	13-15	11-13	P-3 T-3 E-2		
Kobra 240 C4	99.741	cross cut	3,5 x 30	13-15	12-14	P-4 T-4 E-3 F-1		
Kobra 240 C2	99.731	cross cut	1,9 x 15	10-12	9-11	P-5 T-5 E-4 F-2		
Kobra 240 HS	99.751	high security cross-cut	0,8 x 9,5	6-8	5-6	P-6 T-6 F-3		
Kobra 240 HS-6	99.756	high security cross-cut	0,8 x 5	4-5	3-4	P-7 F-3		
Model	Article Code	Shred Type	Shred Size mm	Sheet Capacity*		Security Level ISO/IEC 21964 (DIN 66399)	Shreddable Material	
Kobra 240 SS5 Turbo	99.721 TURBO	straight cut	5,8	50-52	40-44	P-2 0-2 T-2 E-2		
Kobra 240 SS4 Turbo	99.706 TURBO	straight cut	3,8	28-30	25-26	P-2 0-2 T-2 E-2		
Kobra 240 C4 Turbo	99.741 TURBO	cross cut	3,5 x 30	24-26	19-21	P-4 0-3 T-4 E-3 F-1		
Kobra 240 C2 Turbo	99.731 TURBO	cross cut	1,9 x 15	17-19	14-16	P-5 T-5 E-4 F-2		

\* Capacity may vary on power supply, paper quality and lubrication of cutting knives

# KOBRA 260.1

## CLASSIC LINE SMALL/MEDIUM OFFICE PROFESSIONAL SHREDDERS



Shreds up to 31 sheets of paper at a time (A4 70gr), CDs/DVDs, credit cards, floppy-disks and films (see model specifications)

60 liter cabinet mounted on casters

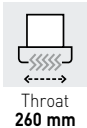
Dimensions (WxDxH): cm 40 x 36 x 84



- **SUPER POTENTIAL POWER SYSTEM:** heavy duty chain drive with metal gears
- **24 HOUR CONTINUOUS DUTY MOTOR** without overheating and duty cycles. Motor thermal protection.
- **CARBON HARDENED STEEL CUTTING KNIVES** unaffected by staples and clips
- **ENERGY SMART®** power saving stand-by mode after just 8 seconds of no-operation
- **AUTOMATIC START & STOP** through electronic eyes with stand-by function
- **SAFETY STOP:** automatic stop with light signal for bag full and/or open door
- **AUTOMATIC REVERSE SYSTEM** in case of jamming

Model	Article Code	Shred Type	Shred Size mm	Sheet Capacity* A4 70 gr A4 80 gr	Security Level ISO/IEC 21964 [DIN 66399]	Shreddable Material	
260.1 S5	99.917	straight cut	5,8	29-31 25-27	P-2 0-2 T-2 E-2		
260.1 S4	99.916	straight cut	3,8	26-28 22-24	P-2 0-2 T-2 E-2		
260.1 S2	99.915	straight cut	1,9	14-16 12-14	P-3 T-3 E-2		
260.1 C4	99.919	cross cut	3,5 x 30	15-17 13-15	P-4 0-3 T-4 E-3 F-1		
260.1 C2	99.918	cross cut	1,9 x 15	10-12 9-11	P-5 T-5 E-4 F-2		
260.1 HS	99.920	high security cross-cut	0,8 x 9,5	6-8 5-6	P-6 T-6 F-3		
260.1 HS-6	99.921	high security cross-cut	0,8 x 5	4-5 3-4	P-7 F-3		

\* Capacity may vary on power supply, paper quality and lubrication of cutting knives



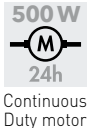
Throat  
260 mm



Cabinet  
60 liters



Dimensions  
40x36x84cm



500 W  
24h  
Continuous  
Duty motor

# KOBRA 260

## CLASSIC LINE SMALL/MEDIUM OFFICE PROFESSIONAL SHREDDERS



Shreds up to 31 sheets of paper at a time (A4 70gr), CDs/DVDs, credit cards, floppy-disks and films (see model specifications)

85 liter high quality steel cabinet mounted on casters

Dimensions (WxDxH): cm 43 x 31 x 83



- **SUPER POTENTIAL POWER SYSTEM:** heavy duty chain drive with metal gears
- **24 HOUR CONTINUOUS DUTY MOTOR** without overheating. Motor thermal protection.
- **CARBON HARDENED STEEL CUTTING KNIVES** unaffected by staples and clips
- **ENERGY SMART®** power saving stand-by mode
- **AUTOMATIC START & STOP** through electronic eyes
- **SAFETY STOP:** automatic stop with light signal for bag full and/or open door
- **AUTOMATIC REVERSE** in case of jamming
- **NSA EPL LISTED** (HS-6 model)



### OPTION

**ACCU-FLOW** External Automatic Oiler to lubricate cutting knives (available on cross-cut models)

Model	Article Code	Shred Type	Shred Size mm	Sheet Capacity* A4 70 gr A4 80 gr	Security Level ISO/IEC 21964 [DIN 66399]	Shreddable Material	
260 S5	99.516	straight cut	5,8	29-31 25-27	P-2 0-2 T-2 E-2		
260 S4	99.511	straight cut	3,8	26-28 22-24	P-2 0-2 T-2 E-2		
260 S2	99.501	straight cut	1,9	14-16 12-14	P-3 T-3 E-2		
260 C4	99.531	cross cut	3,5 x 30	15-17 13-15	P-4 T-4 E-3 F-1		
260 C2	99.521	cross cut	1,9 x 15	10-12 9-11	P-5 T-5 E-4 F-2		
260 HS	99.541	high security cross-cut	0,8 x 9,5	6-8 5-6	P-6 T-6 F-3		
260 HS-6	99.546	high security cross-cut	0,8 x 5	4-5 3-4	P-7 F-3		

\* Capacity may vary on power supply, paper quality and lubrication of cutting knives

Option	Code	Description	Available
ACCU-FLOW External Auto-Oiler	99.017	Automatically lubricates cutting knives	Cross-cut models

# KOBRA 300.1

## CLASSIC LINE MEDIUM-SIZE OFFICE PROFESSIONAL SHREDDERS



Shreds up to 32 sheets of paper at a time (A4 70gr), CDs/DVDs, credit cards, floppy-disks and films (see model specifications)

110 liter high volume cabinet mounted on casters

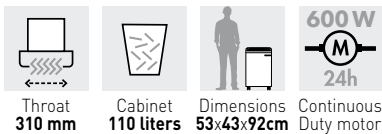
Dimensions (WxDxH): cm 53 x 43 x 92



- **SUPER POTENTIAL POWER SYSTEM:**  
heavy duty chain drive with metal gears
- **24 HOUR CONTINUOUS DUTY MOTOR**  
without overheating and duty cycles. Motor thermal protection.
- **CARBON HARDENED STEEL CUTTING KNIVES**  
unaffected by staples and clips. High efficiency cutting knives allow impressive shredding capacity.
- **ENERGY SMART®** management system with illuminated indicators: the machine goes into power saving stand-by mode after just 8 seconds of no-operation
- **AUTOMATIC START & STOP** through electronic eyes with stand-by function. Integrated flap for CD/DVD, floppy-disk and credit card shredding.
- **SAFETY STOP:** automatic stop with light signal for bag full and/or open door
- **AUTOMATIC REVERSE SYSTEM** in case of jamming
- **HIGH VOLUME CABINET** mounted on casters. Easy to remove waste bag.



Energy Smart Management System  
with illuminated indicators for zero consumption  
in stand-by-mode



Heavy duty chain drive  
with steel gears



High volume cabinet  
Easy to remove waste bag

Model	Article Code	Shred Type	Shred Size mm	Sheet Capacity*		Security Level ISO/IEC 21964 (DIN 66399)	Shreddable Material	
				A4 70 gr	A4 80 gr			
Kobra 300.1 S5	99.923	straight cut	5,8	30-32	24-26	P-2 0-2 T-2 E-2		
Kobra 300.1 S4	99.922	straight cut	3,8	27-29	22-24	P-2 0-2 T-2 E-2		
Kobra 300.1 C4	99.925	cross cut	3,9 x 40	20-22	18-20	P-4 0-3 T-4 E-3 F-1		
Kobra 300.1 C2	99.924	cross cut	1,9 x 15	12-14	10-12	P-5 T-5 E-4 F-2		
Kobra 300.1 HS	99.926	high security cross-cut	0,8 x 9,5	8-10	7-8	P-6 T-6 F-3		
Kobra 300.1 HS-6	99.927	high security cross-cut	0,8 x 5	4-5	3-4	P-7 F-3		

\* Capacity may vary on power supply, paper quality and lubrication of cutting knives



# KOBRA 300.2

## CLASSIC LINE MEDIUM-SIZE OFFICE PROFESSIONAL SHREDDERS



Shreds up to 40 sheets of paper at a time (A4 70gr), CDs/DVDs, credit cards, floppy-disks and films (see model specifications)

135 liter high volume cabinet mounted on casters

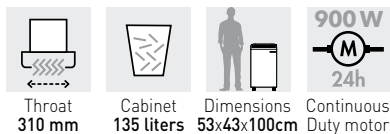
Dimensions (WxDxH): cm 53 x 43 x 100



- **SUPER POTENTIAL POWER SYSTEM:**  
heavy duty chain drive with metal gears
- **24 HOUR CONTINUOUS DUTY MOTOR**  
without overheating and duty cycles. Motor thermal protection.
- **CARBON HARDENED STEEL CUTTING KNIVES**  
unaffected by staples and clips. High efficiency cutting knives allow impressive shredding capacity.
- **ENERGY SMART®** management system with illuminated indicators: the machine goes into power saving stand-by mode after just 8 seconds of no-operation
- **AUTOMATIC START & STOP** through electronic eyes with stand-by function. Integrated flap for CD/DVD, floppy-disk and credit card shredding.
- **SAFETY STOP:** automatic stop with light signal for bag full and/or open door
- **AUTOMATIC REVERSE SYSTEM** in case of jamming
- **HIGH VOLUME CABINET** mounted on casters. Easy to remove waste bag.



High efficiency cutting knives  
allow impressive shredding capacity



Heavy duty chain drive  
with steel gears



High volume cabinet  
Easy to remove waste bag

Model	Article Code	Shred Type	Shred Size mm	Sheet Capacity*		Security Level ISO/IEC 21964 (DIN 66399)	Shreddable Material	
				A4 70 gr	A4 80 gr			
Kobra 300.2 S5	99.929	III straight cut	5,8	37-40	33-35	P-2 0-2 T-2 E-2		
Kobra 300.2 S4	99.928	III straight cut	3,8	31-33	27-29	P-2 0-2 T-2 E-2		
Kobra 300.2 C4	99.931	III cross cut	3,9 x 40	25-27	23-25	P-4 0-3 T-4 E-3 F-1		
Kobra 300.2 C2	99.930	III cross cut	1,9 x 15	16-18	14-15	P-5 0-4 T-5 E-4 F-2		
Kobra 300.2 HS	99.932	III high security cross-cut	0,8 x 9,5	9-11	8-9	P-6 T-6 F-3		
Kobra 300.2 HS-6	99.933	III high security cross-cut	0,8 x 5	5-6	4-5	P-7 F-3		

\* Capacity may vary on power supply, paper quality and lubrication of cutting knives

# KOBRA 300

## CLASSIC LINE MEDIUM-SIZE OFFICE PROFESSIONAL SHREDDERS



Shreds up to 46 sheets of paper at a time (A4 70gr), CDs/DVDs, credit cards, floppy-disks and films (see model specifications)

85 liter high quality steel cabinet mounted on casters

Dimensions (WxDxH): cm 43 x 31 x 83



Throat  
300 mm



Cabinet  
85 liters



Dimensions  
43x31x83cm



920 W  
24h  
Continuous  
Duty motor

- **TWO HEAVY DUTY CHAIN DRIVE UNITS** with steel gears "Super Potential Power System"
- **TWO MOTORS: 24 HOUR CONTINUOUS DUTY OPERATIONS** without overheating and duty cycles. Motor thermal protection.
- **CARBON HARDENED STEEL CUTTING KNIVES** unaffected by staples and clips
- **ENERGY SMART®** power saving stand-by mode after just 8 seconds of no-operation
- **AUTOMATIC START & STOP** through electronic

eyes with stand-by function

- **SAFETY STOP:** automatic stop with light signal for bag full and/or open door
- **AUTOMATIC REVERSE** in case of jamming
- **NSA EPL LISTED** (HS-6 model)



### OPTION

**ACCU-FLOW** External Automatic Oiler to lubricate cutting knives available on cross-cut models

Model	Article Code	Shred Type	Shred Size mm	Sheet Capacity* A4 70 gr	Sheet Capacity* A4 80 gr	Security Level ISO/IEC 21964 (DIN 66399)	Shreddable Material	
300 SS5	99.652	straight cut	5,8	42-46	37-39	P-2 0-2 T-2 E-2		
300 SS4	99.650	straight cut	3,8	32-34	28-30	P-2 0-2 T-2 E-2		
300 CC4	99.656	cross cut	3,5 x 30	22-24	20-22	P-4 0-3 T-4 E-3 F-1		
300 CC2	99.654	cross cut	1,9 x 15	16-18	14-15	P-5 T-5 E-4 F-2		
300 HS	99.658	high security cross-cut	0,8 x 9,5	10-12	9-11	P-6 T-6 F-3		
300 HS-6	99.660	high security cross-cut	0,8 x 5	5-6	5	P-7 F-3		

\* Capacity may vary on power supply, paper quality and lubrication of cutting knives

# KOBRA 385

## CLASSIC LINE MEDIUM-SIZE OFFICE PROFESSIONAL SHREDDERS



Shreds up to 29 sheets of paper at a time (A4 70gr), CDs/DVDs, credit cards, films (see model specifications)

130 liter high quality steel cabinet mounted on casters, easy to remove waste bag

Dimensions (WxDxH): cm 58 x 35 x 85



Throat  
385 mm



Cabinet  
130 liters



Dimensions  
58x35x85cm



920 W  
24h  
Continuous  
Duty motor

- **SUPER POTENTIAL POWER SYSTEM:** heavy duty chain drive with metal gears
- **24 HOUR CONTINUOUS DUTY OPERATION** without overheating and duty cycles. Motor thermal protection.
- **CARBON HARDENED STEEL CUTTING KNIVES** unaffected by staples and clips
- **ENERGY SMART®** power saving stand-by mode, the machine goes into stand-by mode after just 8 seconds of no-operation
- **AUTOMATIC START & STOP** through electronic

eyes with stand-by function

- **SAFETY STOP:** automatic stop with light signal for bag full and/or open door
- **AUTOMATIC REVERSE** in case of jamming
- **HIGH CAPACITY:** designed for medium/high shredding volume

### OPTION

**ACCU-FLOW** External Automatic Oiler to lubricate cutting knives available on cross-cut models

Model	Article Code	Shred Type	Shred Size mm	Sheet Capacity* A4 70 gr	Sheet Capacity* A4 80 gr	Security Level ISO/IEC 21964 (DIN 66399)	Shreddable Material	
385 SS4	99.561	straight cut	3,8	27-29	25-27	P-2 0-2 T-2 E-2		
385 C4	99.581	cross cut	3,5 x 30	24-26	22-24	P-4 T-4 E-3 F-1		
385 C2	99.571	cross cut	1,9 x 15	14-15	13-14	P-5 T-5 E-4 F-2		

\* Capacity may vary on power supply, paper quality and lubrication of cutting knives

Option	Code	Description	Available
ACCU-FLOW External Auto-Oiler	99.017	Automatically lubricates cutting knives	Cross-cut models

# KOBRA 390 and KOBRA 400

## CLASSIC LINE MULTIPLE-USER HEAVY DUTY PROFESSIONAL SHREDDERS



Shreds up to 47 sheets of paper at a time (A4 70gr), CDs/DVDs, credit cards, floppy-disks and films (see model specifications)

200 liter high volume steel cabinet mounted on casters

Dimensions (WxDxH): cm 60 x 48 x 93



- **SUPER POTENTIAL POWER SYSTEM:** heavy duty chain drive with metal gears  
**TWO CHAIN DRIVE SYSTEMS** (390 model)
- **24 HOUR CONTINUOUS DUTY OPERATION** without overheating and duty cycles. Motor thermal protection.  
**TWO MOTORS** 750 watt each (390 model)  
**POWERFUL MOTOR** 2100 watt (400 model)
- **CARBON HARDENED STEEL CUTTING KNIVES** unaffected by staples and clips
- **ENERGY SMART®** power saving stand-by mode after just 8 seconds of no-operation
- **AUTOMATIC START & STOP** through electronic eyes with stand-by function
- **SAFETY STOP:** automatic stop with light signal for bag full and/or open door
- **AUTOMATIC REVERSE** in case of jamming
- **200 LITER HIGH QUALITY STEEL CABINET** mounted on casters
- **HIGH CAPACITY:** designed for high shredding volume



**ENERGY SMART®** illuminated optical indicator for power saving stand-by mode and environmental protection



Throat  
400 mm



Cabinet  
200 liters



Dimensions  
60x48x93cm



**1500 W**  
24h  
**KOBRA 390**  
Continuous  
Duty motor



**2100 W**  
24h  
**KOBRA 400**  
Continuous  
Duty motor



**High volume steel cabinet**  
Easy to remove waste bag (200 liters)



**Heavy duty chain drive**  
with steel gears

Model	Article Code	Shred Type	Shred Size mm	Sheet Capacity*		Security Level ISO/IEC 21964 [DIN 66399]	Shreddable Material	
<b>Kobra 390 S5</b>	99.641	III straight cut	5,8	45-47	43-45	<b>P-2</b> 0-2 T-2 E-2		
<b>Kobra 390 C4</b>	99.631	III cross cut	3,9 x 40	31-33	29-30	<b>P-4</b> 0-3 T-4 E-3 F-1		
Model	Article Code	Shred Type	Shred Size mm	Sheet Capacity*		Security Level ISO/IEC 21964 [DIN 66399]	Shreddable Material	
<b>Kobra 400 S5</b>	99.601	III straight cut	5,8	60-62	52-54	<b>P-2</b> 0-2 T-2 E-2		
<b>Kobra 400 C4</b>	99.591	III cross cut	3,9 x 40	44-48	40-42	<b>P-4</b> 0-3 T-4 E-3 F-1		
<b>Kobra 400 C2</b>	99.596	III cross cut	1,9 x 15	29-31	25-27	<b>P-5</b> 0-4 T-5 E-4 F-2		

\* Capacity may vary on power supply, paper quality and lubrication of cutting knives

Option	Code	Description	Available
Document Shelf	99.003	Top shelf to save office space	All models
Automatic Oiler	Art. Code + <b>A0</b>	Automatically lubricates cutting knives	Cross-cut models
Metal Detection System	Art. Code + <b>MD</b>	Detects metal presence to prevent damages to cutting knives	All models



# KOBRA 260 HS/2

## EMERGENCY POWER BLACK-OUT HIGH SECURITY SHREDDER



Shreds up to **13 fogli** per volta (A4 70gr), credit cards and films (see model specifications)

**85 liter** steel cabinet mounted on casters

**Dimensions** (WxDxH): cm 50 x 38 x 85



**NSA EPL Listed**

### Designed for special applications: Military Bodies, Governmental Authorities and Offices handling Classified and Top Secret media

- **EMERGENCY MANUAL SYSTEM** to shred Top Secret documents even in case of no power supply (emergencies, military or terrorism attacks)
- **SUPER POTENTIAL POWER SYSTEM:** heavy duty chain drive with metal gears
- **POWERFUL DOUBLE MOTOR DRIVING SYSTEM** with thermal protection
- **24 HOUR CONTINUOUS DUTY OPERATION** without overheating and duty cycles
- **CARBON HARDENED STEEL CUTTING KNIVES:** the high security cut of 0,8 x 5 mm meets the latest shredding standards issued by the National Security Agency of the US Government
- **ENERGY SMART®** power saving system, the machine goes into power saving stand-by mode after just 8 seconds of no-operation
- **AUTOMATIC START & STOP** with stand-by function
- **SAFETY STOP:** automatic stop with light signal for bag full and/or open door
- **AUTOMATIC REVERSE** in case of jamming

#### OPTION

**KOBRA ACCU-FLOW AUTOMATIC OILING SYSTEM:**  
eliminates the need of manual lubrication of cutting knives



Throat  
**260 mm**



Cabinet  
**85 liters**



Dimensions  
**50x38x85cm**



Continuous  
Duty motor  
**700 W**  
**24h**



Tested and approved by many international Governments and Military Bodies, this shredder is also being used by the US department of States, the CIA and the National Security Agency



**Accu-Flow Automatic Oiling System**  
(Option): eliminates the need of manual lubrication of cutting knives



**Manual crank** to shred documents in case of power loss (not included)

Model	Article Code	Shred Type	Shred Size mm	Sheet Capacity*		Security Level ISO/IEC 21964 (DIN 66399)	Shreddable Material	
				A4 70 gr	A4 80 gr			
<b>Kobra 260 HS/2</b>	99.113	high security cross-cut	0,8 x 9,5	11-13	10-11	<b>P-6</b> T-6 F-3		
<b>Kobra 260 HS/2-6</b>	99.116	high security cross-cut	0,8 x 5	5-6	5	<b>P-7</b> F-3		

\* Capacity may vary on power supply, paper quality and lubrication of cutting knives

Option	Code	Description	Available
Document Shelf	99.001	Top shelf to save office space	All models
ACCU-FLOW External Automatic Oiler	99.017	Automatically lubricates cutting knives	All models

# KOBRA 400 HS Auto-Oiler

## HIGH SECURITY P-6 P-7 SHREDDER WITH INTEGRATED AUTOMATIC OILER



Shreds up to 19 sheets of paper at a time (A4 70gr), credit cards and films (see model specifications)

200 liter high volume steel cabinet mounted on casters

Dimensions (WxDxH): cm 60 x 48 x 93



### Especially designed for *Classified* and *Top Secret* document shredding

- **SUPER POTENTIAL POWER SYSTEM:** heavy duty chain drive with metal gears
- **24 HOUR CONTINUOUS DUTY OPERATION** without overheating and duty cycles. Motor thermal protection.
- **CARBON HARDENED STEEL CUTTING KNIVES:** : the high security cut of 0,8 x 5 mm meets the latest shredding standards issued by the National Security Agency of the US Government
- **ENERGY SMART®** power saving system, the machine goes into power saving stand-by mode after just 8 seconds of no-operation
- **AUTOMATIC INTEGRATED OILING SYSTEM:** automatically lubricates the high security cutting knives during the operation of the shredder for continuous maximum shredding capacity
- **AUTOMATIC START & STOP** through electronic eyes with stand-by function
- **SAFETY STOP:** automatic stop with light signal for bag full and/or open door
- **AUTOMATIC REVERSE** in case of jamming
- **NSA EPL LISTED** (HS-6 model)



#### OPTION

**METAL DETECTOR:** detects metal presence and stops the Machine to prevent damages to cutting knives. A blue flashing light warns the operator of the presence of metal.



Throat  
400 mm



Cabinet  
200 liters



Dimensions  
60x48x93cm



Continuous  
Duty motor



Tested and approved by many international Governments and Military Bodies, this shredder is also being used by the US department of States, the CIA and the National Security Agency



**Automatic Integrated Oiling System**  
standard on kobra high security models:  
automatically lubricates cutting knives for  
continuous maximum shredding capacity



**Metal Detector (Option):**  
detects metal presence and stops the  
machine to prevent damages to cutting  
knives. A blue flashing light warns the  
operator of the presence of metal.

Model	Article Code	Shred Type	Shred Size mm	Sheet Capacity*		Security Level ISO/IEC 21964 (DIN 66399)	Shreddable Material	
				A4 70 gr	A4 80 gr			
Kobra 400 Auto-Oiler HS	99.587	high security cross-cut	0,8 x 9,5	17-19	13-15	P-6 T-6 F-3		
Kobra 400 Auto-Oiler HS-6	99.589	high security cross-cut	0,8 x 5	8-10	8-9	P-7 F-3		

\* Capacity may vary on power supply, paper quality and lubrication of cutting knives

Option	Code	Description	Available	
Document Shelf	99.003	Top shelf to save office space	All models	
Metal Detection System	Art. Code + <b>MD</b>	Detects metal presence to prevent damages to cutting knives	All models	

# KOBRA 400 HS OPTICAL MEDIA

## HIGH SECURITY P-6 P-7 OPTICAL MEDIA AND DOCUMENT SHREDDERS



Shreds up to 19 sheets at a time and up to 2.100 disks per hour (400 COMBI) • Shreds up to 2.100 disks per hour (400 OM)  
110 liter bag for paper shreds + 80 liter strong re-usable fabric bag for optical media shreds  
Dimensions (WxDxH): cm 60 x 48 x 93



NSA EPL Listed



Kobra 400 HS OM  
Suitable for optical  
media shredding

Kobra 400 COMBI HS/HS-6  
Suitable for the combination of  
optical media and paper shredding

### Designed for Military Bodies, Governmental Authorities and Offices handling *Classified* and *Top Secret* media

- **SUPER POTENTIAL POWER SYSTEM:** heavy duty chain drive with metal gears
- **24 HOUR CONTINUOUS DUTY OPERATION** without overheating and duty cycles. Motor thermal protection.
- **CARBON HARDENED STEEL CUTTING KNIVES - SPECIAL 1,5x2 mm CUTTING SYSTEM:** it's the highest security level today available for optical media to meet the strictest military and governments shredding needs
- **ENERGY SMART®** power saving stand-by mode after just 8 seconds of no-operation
- **AUTOMATIC INTEGRATED OILING SYSTEM:** automatically lubricates the high security cutting knives during the operation of the shredder for continuous maximum shredding capacity
- **AUTOMATIC START & STOP** through electronic eyes
- **SAFETY STOP:** automatic stop for bag full and/or open door
- **AUTOMATIC REVERSE** in case of jamming
- **STURDY HIGH QUALITY STEEL CABINET** mounted on casters

#### OPTION

**METAL DETECTOR:** detects metal presence and stops the Machine to prevent damages to cutting knives. A blue flashing light warns the operator of the presence of metal.



Throat  
130 mm cd/dvd  
240 mm paper



Waste Bag  
OM 80 liters  
COMBI 110+80 liters



Dimensions  
60x48x93cm



Continuous  
Duty motor



Tested and approved by many international Governments and Military Bodies, this shredder is also being used by the US department of States, the CIA and the National Security Agency. Approved by ASIO Australian Security Intelligence Organization.



#### Automatic Integrated Oiler

Automatically lubricates cutting knives for continuous maximum shredding capacity



#### Metal Detector (Option):

detects metal presence and stops the machine to prevent damages to cutting knives

Model	Article Code	Shred Type	Paper Shred Size mm	CD/DVD Shred Size mm	Sheet Capacity* A4 70 gr	A4 80 gr	CD/DVD Capacity per hour	Security Level ISO/IEC 21964 (DIN 66399)	Shreddable Material
Kobra 400 HS OM	99.585	high security cross-cut	-	1,5 x 2	-	-	2.100	0-6 T-6 E-5	
Kobra 400 COMBI HS	99.602	high security cross-cut	0,8 x 9,5	1,5 x 2	17-19	13-15	2.100	P-6 0-6 T-6 E-5 F-3	
Kobra 400 COMBI HS-6	99.603	high security cross-cut	0,8 x 5	1,5 x 2	8-10	8-9	2.100	P-7 0-6 T-6 E-5 F-3	

\* Capacity may vary on power supply, paper quality and lubrication of cutting knives

Option	Code	Description	Available
Metal Detection System	Art. Code + MD	Detects metal presence to prevent damages to cutting knives	On 400 COMBI Models



# KOBRA 400 WB

## CLASSIC LINE CENTRALIZED SHREDDER FOR OFFICE PAPER WASTE BASKETS



**Shreds up to 48 sheets** of paper at a time (A4 70gr), CDs/DVDs, credit cards, floppy-disks, films, crumpled paper  
**200 liter** high quality steel cabinet mounted on casters  
**Dimensions** (WxDxH): cm 60 x 48 x 163



- The KOBRA 400 WB with its **HOPPER** allows users to simply empty the content of a waste paper basket directly into the machine
- **AUTOMATIC MECHANICAL FEEDING SYSTEM** through revolving flaps for easy shredding of waste material contained in the office waste basket
- **SUPER POTENTIAL POWER SYSTEM:** heavy duty chain drive with metal gears
- **POWERFUL 2100 WATT MOTOR: 24 HOUR CONTINUOUS DUTY OPERATION** without overheating and duty cycles for continuous shreds. Motor thermal protection.
- Switch to activate continuous shredding operations
- **CARBON HARDENED STEEL CUTTING KNIVES** unaffected by staples and clips, shred floppy-disks, CDs/DVDs, credit cards, plain or crumpled paper
- **AUTOMATIC START & STOP** through electronic eyes with stand-by function
- **SAFETY STOP:** automatically stops at bin removal and/or full waste bag
- **AUTOMATIC REVERSE** in case of jamming
- **200 LITER STURDY STEEL CABINET** mounted on casters
- Convenient removable front shelf to hold documents to be shredded



Throat  
400 mm



Cabinet  
200 liters



Dimensions  
60x48x163cm



Continuous  
Duty motor



Automatic mechanical feeding system utilizes revolving flaps to feed material into cutting knives



The hopper allows users to simply empty the contents of a waste paper basket directly into the machine

Model	Article Code	Shred Type	Shred Size mm	Sheet Capacity*		Security Level ISO/IEC 21964 (DIN 66399)	Shreddable Material	
				A4 70 gr	A4 80 gr			
Kobra 400 WB	99.620	III cross cut	3,9 x 40	44-48	40-42	P-4 0-3 T-4 E-3 F-1		

\* Capacity may vary on power supply, paper quality and lubrication of cutting knives

# Industrial Line Mighty and Power



## KOBRA HDD

### Hard Disk Drive Shredder

*Deleting data isn't enough to completely erase your sensitive data: the hard drive destruction machine guarantees maximum protection of data security*

The powerful gear system of **KOBRA HDD** shredder can splitt hard disk drives into small pieces to make it impossible to obtain data from it.



NSA EPL Listed

## KOBRA SSD

### Solid State Drive Shredder

*Smartphone and SSD High Security shredding*

**KOBRA SSD** is an NSA Approved Solid State Drive shredder capable of destroying solid state drives, smartphones, memory sticks, iPads, USB memory devices, pen drives, tablets, circuit boards, credit cards, CDs/DVDs/Blu-Rays. Equipped with an exclusive two stage of destruction system (HS Model) can reduce shredded material into sand-like texture particles.





NSA EPL Listed

## KOBRA CYCLONE System

*High Technology Shredding System allows high volume shredding and maintenance free operation*

### KOBRA CYCLONE SYSTEM

Blades rotating at a very high speed, combined with the power of a turbine providing the unit with an airflow, allow the shredding of up to 500 sheets of paper at a time as well as the shredding of many other types of materials into 5 different available particle sizes.



## KOBRA C-500 Compactor

*Designed to work with Kobra Cyclone when paper is being shredded*

### KOBRA COMPACTOR C-500

This optional accessory **compresses and reduces the volume of the shredded paper by 4 to 5 times** to minimize the space required for disposal. Easy to install and operate, the KOBRA COMPACTOR C-500 will work with any security level screen.



## KOBRA 430 TS

**High Capacity Industrial Shredder with conveyor belt**

*Designed for large shredding throughput and continuous shredding operation*

**Conveyor Belt for easy and fast feeding of material to shred.** Convenient 430 mm entry, large shelf holding material to be shredded. Can shred entire archives: up to 130 sheets at a time, folders, cardboards, CD/DVD/Blu-Ray disks, credit cards, floppy-disks and USB pen drives.



# KOBRA SSD

## SOLID STATE DRIVE HIGH SECURITY DISINTEGRATOR



NSA EPL Listed

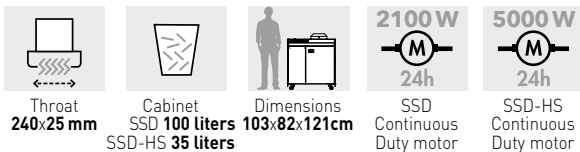


**KOBRA SSD IS A SOLID STATE DRIVE SHREDDER** equipped with an exclusive two stage of destruction system (HS Model) capable of destroying Solid State Drives, Solid State SIM Cards, CAC ID, EMV Credit Cards, Magnetic Strip Card, Flash Drives, Circuit Boards, Enterprise Solid State Drives, Cell Phones, Tablets, USB Pen Drives, CDs/DVDs, Blu Ray Discs, USB Memory Devices, Credit Cards and ID Cards with embedded electronic chip and/or magnetic media, flash memory IC chips, CPU chips with internal ROM and/or flash memory.

Kobra SSD has been approved by NSA and meets the requirements of NSA/CSS Specifications for Solid State Devices destruction. Shredded material is reduced to sand-like texture particles (HS Model).

Kobra SSD is equipped with an integrated internal state-of-the-art HEPA air filtration system to ensure a clean, safe and comfortable operating environment.

Easy access 240 x 25 mm feed port is designed with a safety brush covering the complete opening for safety and ease of feed operation. Lockable feed hopper cover prevents unauthorized access to the contents of the hopper once material is fed into the machine.



- **EXCLUSIVE SHREDDING TECHNOLOGY** with two stages of destruction to pulverize solid state drives (HS Model)
- **HIGH EFFICIENCY MOTOR** can save a considerable electrical energy cost
- **SECURITY LEVEL:** reaches and exceeds NSA/EPL 9-12 reducing shredded material in sand-like texture particles (HS Model)
- **SPECIAL HEPA AIR FILTRATION SYSTEM** ensures a clean and safe operating environment
- **SAFETY STOP** for bin access door, air filtration system, access door and feed hopper
- **LIGHTED INDICATOR DISPLAYS** keep the operator informed of machine's operating status
- **EMERGENCY STOP SWITCH:** stops immediately all machine functions



Easy access to cutting units and waste container



Easy removal and emptying of waste container

Model	Article Code	Shred Size	Security Level ISO/IEC 21964 (DIN 66399)	Shreddable Material	
Kobra SSD	99.940	10 x 8-15 mm	Similar to T-1 E-2 H-3	Solid State Drive devices	
Kobra SSD-HS	99.938	Sand-like texture particles	Similar to O-7 T-7 E-7	Solid State Drive devices	



# KOBRA HDD

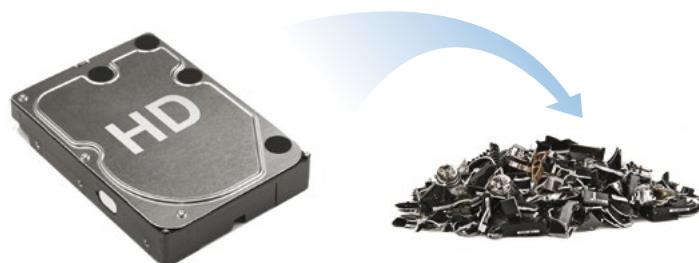
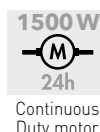
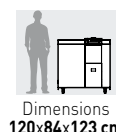
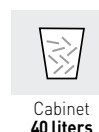
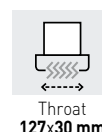
## HARD DISK DRIVE SHREDDER

**KOBRA HDD IS A HARD DISK DRIVE SHREDDER** data protection compliant capable of destroying Digital Media Devices including Hard Drives up to 3.5", LTO, Ultrium, Magnetic Tapes up to 3.5", CDs, DVDs, Blu-ray Optical Media, Credit and Identity Cards, USB Sticks and Solid State (Phones and PDAs).

The new KOBRA HDD produces very low noise levels on a 24 hour continuous duty operation, destroying all kind of digital media devices into tiny 40 mm strip cut and making retrieval impossible. KOBRA HDD power unit durability and robustness can shred up to 280 hard drives per hour and it plugs into a standard single phase power supply.

KOBRA HDD carries the latest Touch Screen Technology, the most technologically advanced on the market today. Functions are activated by simply touching the panel. Also, illuminated optical indicators clearly show the current status of the machine.

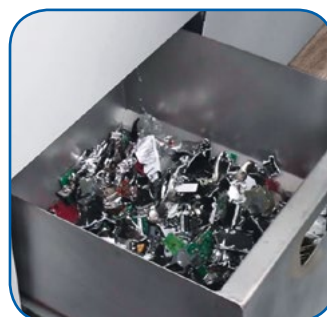
- **24 HOUR CONTINUOUS DUTY** enables powerful and long operation at a minimum noise level
- **TOUCH SCREEN PANEL**
- **EXCLUSIVE SHREDDING TECHNOLOGY** through high carbon grade steel cutting knives
- **HIGH EFFICIENCY MOTOR:** can save a considerable electrical energy cost
- Bag full **AUTOMATIC STOP** with light indicator
- **SAFETY STOP** in case of open door / bin removal
- **EASY TO MOVE UNIT** thanks to the casters applied at the bottom of the machine
- **EMERGENCY STOP SWITCH:** stops immediately all machine functions



Reliable, sturdy and durable hardened solid-steel cutting units



Convenient touch-screen panel for the operation of the KOBRA HDD



Easy removal and emptying of waste container



Kobra HDD can be supplied, on request, with an NSA National Security Agency approved Hard Disk degausser

Model	Article Code	Shred Size	Security Level ISO/IEC 21964 (DIN 66399)	Shreddable Material	
Kobra HDD	99.945	40 mm	T-1 E-2 H-3	Hard Disk Drives	

Option	Code	Description	Erasure Capacity	
Kobra DEGAUSSER	97.111	Super fast erasing time: 0,1 second (up to 280 HDD per hour). Completely erases digital data on all magnetic data. Data cannot be recovered.	1 x 3.5" HDD or 8 x 2.5" HDD	

# KOBRA CYCLONE

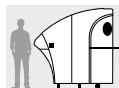
## MULTI-PURPOSE HEAVY DUTY INDUSTRIAL SHREDDER



Throat  
325x220mm



Waste Bag  
400 liters



Dimensions  
80x212x210cm



NSA EPL Listed



- **SHREDS UP TO 500 SHEETS AT A TIME** (A4 70gr) regardless of the particle size
- **SHREDDING OUTPUT UP TO 420 KG** (940 lb) of paper per hour (theoretical output)
- **POWERFUL HIGH EFFICIENCY MOTOR:** maximum electrical saving per year
- **BUILT-IN TROLLEY** for easy transport and replacement of the 400 liter disposal bag
- **5 DIFFERENT AVAILABLE SECURITY LEVELS:** particle size can be changed easily at any time to meet the required security level for the shredded material
- **EASY TO USE:** just drop the material into the turbine chamber, KOBRA CYCLONE shreds it all quickly and with no jams. It turns automatically off when shredding is completed for maximum energy and time efficiency.
- **DOES NOT REQUIRE MAINTENANCE:** no oiling of cutting knives or lubrication

**KOBRA CYCLONE** is the ultimate development in shredding technology. Blades rotating at a very high speed combined with the power of a turbine providing the unit with an airflow allow the shredding of up to 500 sheets of paper at a time as well as the shredding of many other types of materials into 5 different available particle sizes.

The size of the particles (Security Level) can be chosen when ordering the machine and it will always be possible to change the Security Level any time after installation of the unit with a simple operation to adapt to any shredding need. Shredding capacity of 500 sheets at a time remains unchanged with any Security Level installed in the machine.

Kobra Cyclone is equipped with an integrated vacuum system specifically designed to provide the operator with clean and dust free shredding environment. The double insulated shredding chamber and special plastic outer housing enclosure for low noise operation.

Kobra Cyclone can reach an **impressive shredding output of 420 kg (940 lbs)** of paper per hour (Theoretical output) without requiring any oiling of cutting knives or special maintenance. This makes the Kobra Cyclone easy to use for everybody at the office.



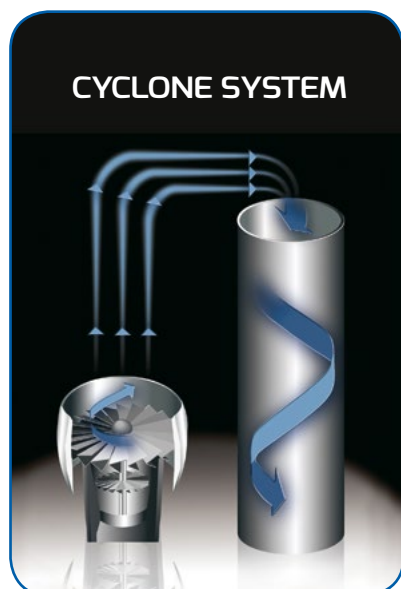
Kobra CYCLONE (standard version): internal storage compartment. Full bags are easily removed by the built-in trolley.



Rear window for easy checking of waste bag level

### KOBRA CYCLONE

#### How It Works, THE TECHNOLOGY



Kobra Cyclone is equipped with a turbine generating a high pressure air flow and sets of high speed rotating blades. By making the air stream spin, particles are subjected to centrifugal forces and deposited from the air flow into the disposal bag. This unique shredding system, delivers the highest shredding performance and efficiency along with maximum flexibility in choosing the correct Security and bulk reduction Level for a given application. Cyclone does not require the special maintenance and complicated oiling procedures that other machines with similar output rates do. **Cyclone is designed for high volume shredding and maintenance free operation.**

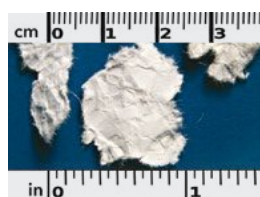


Kobra Cyclone can shred 500 sheets of paper at a time and Playing Cards, Cardboard, Carton Boxes, Floppy disks, Blu-Ray, CDs, DVDs, Credit Cards, Plastic Bottles and Aluminium Cans

Model	Article Code	Sheet Capacity A4 70 gr	CD/DVD Capacity per hour	Credit Cards Capacity per hour	Floppy-Disks Capacity per hour	Security Level available (Cyclone Screens)	
<b>Kobra CYCLONE</b>	99.100	500	45.000	1.500	7.000	002, 003, 004, 005, 006	

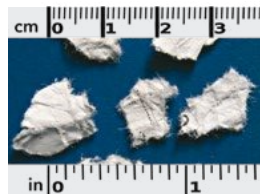
# KOBRA CYCLONE

## MULTI-PURPOSE HEAVY DUTY INDUSTRIAL SHREDDER



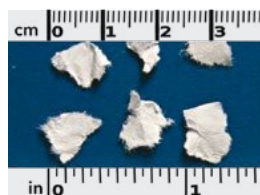
**Level 002**  
Similar to P-2 security level  
**Low degree of bulk reduction of shredded paper**

Shredding output 400-420 Kg (900-940 lbs) per hour (Theoretical Output)



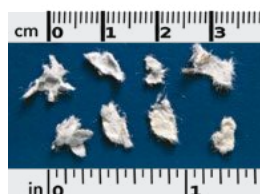
**Level 003**  
Similar to P-2 security level  
**This Security Level is suggested for most common commercial shredding jobs**

Combines an excellent degree of security, bulk reduction of shredded material and shredding output. Shredding output 300-320 Kg (670-715 lbs) per hour (Theoretical Output)



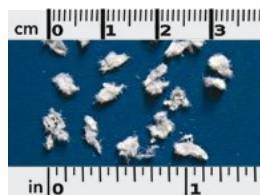
**Level 004**  
Similar to P-4 security level  
**Security Level suitable for destruction of classified documents**

Increased bulk reduction of shredded material. Shredding output 200-230 Kg (445-500 lbs) per hour (Theoretical Output)



**Level 005**  
Similar to P-5/P-6 security level  
**High Security, suitable for Embassies, Military and Government offices**

Very high bulk reduction of shredded material. Shredding output 100-120 Kg (225-265 lbs) per hour (Theoretical Output)



**Level 006**  
Similar to P-7 security level  
**High Security shredding for very classified documents. Military and Government use.**

Maximum bulk reduction of shredded material. Shredding output 70-80 Kg (155-180 lbs) per hour (Theoretical Output)

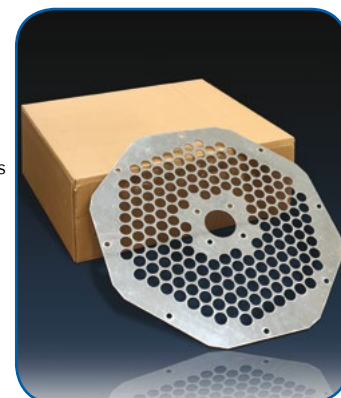
### AVAILABLE SECURITY LEVELS

#### 5 DIFFERENT SECURITY LEVELS ARE AVAILABLE WITH THE KOBRA CYCLONE.

It is possible to switch the machine to any of the available Security Levels by a simple modification which takes only a few minutes. This unique feature allows the Cyclone to produce the output particles which meet the requirements of the most demanding applications in terms of bulk reduction, shredding speed and security.

• **The highest Security Level (Level 006) sets the machine for high security shredding, maximum bulk reduction of shredded material and minimum shredding output per hour.**

• **At the other end of the spectrum the lowest Security Level sets the machine for minimum bulk reduction of shredded material and maximum shredding output per hour.**



Shredding capacity of the Kobra Cyclone will remain at 500 sheets regardless of the Security Level installed. The chart here beside is a helpful guide for choosing the correct set up on the Kobra Cyclone: it shows the available Security Levels and the suggested use of each Level according to shredding output per hour.

Option	Code	Description Security Level ISO/IEC 2196 (DIN 66399)	Shreddable Material
Screen Security Level 002	51.205	Similar to security level P-2 0-2 T-2 E-2	
Screen Security Level 003	51.204	Similar to security level P-2 0-2 T-2 E-2	
Screen Security Level 004	51.203	Similar to security level P-4 0-2 T-3 E-2	
Screen Security Level 005	51.202	Similar to security level P-5/P-6 0-3 T-4 E-3 F-1*	
Screen Security Level 006	51.201	Similar to security level P-7 0-5 T-5 E-4 F-3*	

\* Microfiche only

# KOBRA COMPACTOR C-500

## OPTIONAL ON KOBRA CYCLONE - DESIGNED TO COMPACT THE SHREDDED PAPER



**KOBRA COMPACTOR C-500** is designed to work with the Cyclone industrial shredder when paper is being shredded. When shredding other materials, you simply remove the compactor and use standard Cyclone disposal bags. This optional accessory compresses and **reduces the volume of the shredded paper by 4 to 5 times** to minimize the space required for disposal.

**Easy to install and operate, the Kobra Compactor C-500 will work with any Cyclone security level screen.** Compacted shredded paper can be collected into any type of container or into plastic waste bags.

**Compacting paper increases shredding security of one Level (ISO/IEC 21964 - DIN66399).**



Shredded and compacted paper can be collected into plastic waste bag or any type of container (collection bin is not included)

Model	Article Code	Compactable Material	Theoretical Output per hour	Volume Reduction	
Kobra COMPACTOR C-500	99.101	Paper	Up to 420 Kg	1:4 / 1:5	



# KOBRA 430 TS

## TOUCH SCREEN INDUSTRIAL SHREDDER WITH CONVEYOR BELT



Shreds up to 130 sheets of paper at a time (A4 70gr), credit cards, CDs/DVDs, floppy disks and USB pen drives

470 liter adjustable removable trolley

Dimensions (WxDxH): cm 81 x 161 x 170



- **CONVEYOR BELT**  
for easy feeding of material to shred
- **TOUCH SCREEN PANEL:** machine functions activated just by touching the icons on the control panel
- **SUPER POTENTIAL POWER SYSTEM:**  
heavy duty chain drive with steel gears.
- **CONTINUOUS DUTY SHREDDING:** powerful 4000 Watt 24 hour continuous duty motor, no duty cycles or timed cool down periods. Motor thermal protection.
- **CARBON HARDENED CUTTING KNIVES**  
unaffected by staples and clips
- **AUTOMATIC OILER**  
automatically lubricates cutting knives during the shredding operation, ensuring maximum reliability, efficiency and capacity
- **SAFETY STOP:**  
automatically stops at the door opening and/or full waste bag
- **AUTOMATIC REVERSE** in case of jamming



Throat  
430 mm



Cabinet  
470 liters



Dimensions  
81x161x170cm



Continuous  
Duty motor



**Conveyor Belt** for easy feeding of material to shred



**Touch Screen Panel:** machine functions activated just by touching the icons on the control panel



**470 liter removable adjustable trolley** accommodating one bag of 470 liters or two bags of 235 liters



**Automatic Oiler:** automatically lubricates cutting knives. Sturdy and large volume 470 liter steel cabinet equipped with a dedicated oil container holder.

Model	Article Code	Shred Type	Shred Size mm	Sheet Capacity*		Security Level ISO/IEC 21964 (DIN 66399)	Shreddable Material	Automatic Oiler	
				A4 70gr	A4 80gr				
<b>Kobra 430 TS C4</b>	99.901	III cross cut	5,8 x 50	125-130	100-105	<b>P-3</b> O-2 T-3 E-2 F-1		Included	
<b>Kobra 430 TS C2</b>	99.943	III cross cut	1,9 x 15	60-65	50-55	<b>P-5</b> O-4 T-5 E-4 F-2		Included	

\* Capacity may vary on power supply, paper quality and lubrication of cutting knives



# GUILLOTINES AND TRIMMERS

## Accuracy, Smoothness and Durability

All our KOBRA Guillotines are equipped with our "SUPER CUT" System featuring special carbon hardened steel blades unaffected by the wearing action of the materials to cut and, therefore, they provide longlasting cutting operations with the same cutting precision through the years.

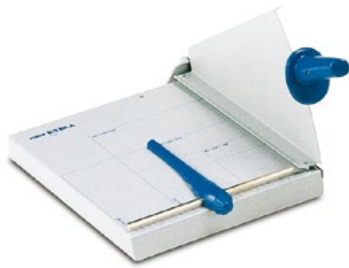
Main feature of our KOBRA "SUPER CUT" System is the **high quality 65° sharpening of the cutting blades** which delivers smooth, accurate and reliable cuts.

The "SUPER CUT" system is a standard feature in the KOBRA guillotine line.



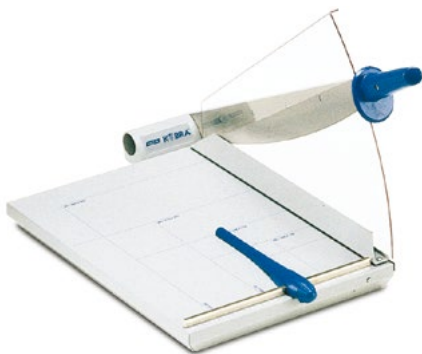
# KOBRA CUT

## Guillotines



### Kobra 360-EM

- High performances guillotines at an affordable cost
- Manual paper press with a built-in safety guard
- Carbon hardened steel precision blade and counterblade
- Adjustable back gauge
- Solid steel base with screen printed paper sizes in centimeters and inches



### Kobra 360-A Kobra 460-A

- Convenient and easy to use
- Can do almost every cutting job
- Innovative automatic and progressive paper press
- Special transparent Lexan hand safety guard
- Adjustable back gauge
- Carbon hardened steel precision blade and counterblade
- Solid steel base with screen printed paper sizes in centimeters and inches
- High cutting capacity and extra large cutting width for model KOBRA 460-A

KOBRA Guillotines and Trimmers are built with the highest quality materials according to ISO 9001:2008 Standards and in accordance to the British Safety Standards BS 5498.

Article Code	Model	Cutting Width mm	Cutting Capacity sheets	Paper Press	Dimensions mm	Weght Kg	
A-1001	<b>Kobra 360-EM</b>	360	15-20	manual	300 x 400	4	
A-1011	<b>Kobra 360-A</b>	360	25-30	automatic	300 x 400	5,5	
A-1021	<b>Kobra 460-A</b>	460	30	automatic	355 x 500	8	

## Material Cross-chart

KOBRA guillotines are designed for almost any cutting job and for a variety of materials.

		Acetate yarn-light	Acrylic fiber	Adhesive film	Adhesive tape	Aluminium foil	Artificial silk max. 1,5 mm	Balsa wood	Butyl	Cardboard-light	Celluloid	Copper foil max 1 mm	Cork	Corrugated paper	Felt	Flannel	Flaxboard	Gold-sheet	Gut	Labels-foil	Labels-paper	Latex	Latex foam	Leather-smooth	Linen	Muslin	Netting-plastic	Nylon	Paper	Paper (light-sensitive)	Photographic film	Plastic films	Plastics-foam-soft	Plastics-polyester yarn	Plastics-polystyrene (expanded)	Plastics-PVC sheet max. 2 mm	Printed circuits	PVC film	Raffia	Rubber-foam	Rubber-sheet	Stockinette		
360-EM	●	●	●	●	●	●		●	●	●	●	●	●	●	●	●	●	●	●	●	●	●	●	●	●	●	●	●	●	●	●	●	●	●	●	●	●	●	●	●	●	●	●	●
360-A	●	●	●	●	●	●	●	●	●	●	●	●	●	●	●	●	●	●	●	●	●	●	●	●	●	●	●	●	●	●	●	●	●	●	●	●	●	●	●	●	●	●	●	●
460-A	●	●	●	●	●	●	●	●	●	●	●	●	●	●	●	●	●	●	●	●	●	●	●	●	●	●	●	●	●	●	●	●	●	●	●	●	●	●	●	●	●	●	●	●

# KOBRA CUT

## Light Duty Trimmers

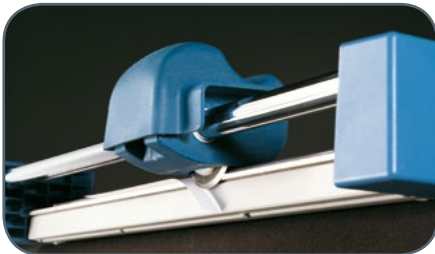


### Kobra 1300-R

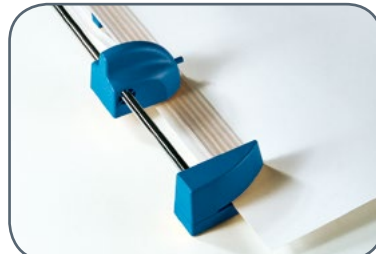
- A0 size rotary trimmer
- Transparent and automatic paper press allows precision cuts of plotter and large size paper
- Side bars for easy alignment of material to cut
- Solid steel base with screen printed paper sizes in centimeters and inches
- Special side openings to cut paper sizes larger than the rated cutting width
- Built-in housing can accommodate paper rolls
- Push-button mechanism for easy and convenient replacement of the cutting blade
- Available as desk top version or with a dedicated stand

KOBRA Guillotines and Trimmers are built with the highest quality materials according to ISO 9001:2008 Standards and in accordance to the British Safety Standards BS 5498.

Article Code	Model	Cutting Width mm	Cutting Capacity mm	Paper Press	Dimensions mm	Weight Kg	
D-1031	<b>Kobra 1300-R</b>	1300	0,8	automatic	1492 x 401 H 98	8	
D-1031 / 1357	<b>Kobra 1300-R with stand</b>	1300	0,8	automatic	1492 x 401 H 1020	21	



Cut is accurate and quick.  
Can be performed in both directions



KOBRA Rotary trimmers can cut paper sizes larger than the rated cutting width through a special side openings



Convenient built-in housing can accommodate paper rolls for easy cutting operations of large sizes of continuous paper

## Material Cross-chart

KOBRA guillotines are designed for almost any cutting job and for a variety of materials.

1300-R	Acetate yarn-light	
	Acrylic fiber	
	Adhesive film	
	Adhesive tape	
	Aluminium foil	
	Artificial silk max. 1,5 mm	●
	Balsa wood	
	Butyl	
	Cardboard-light	●
	Celluloid	
	Copper foil max 1 mm	
	Cork	
	Corrugated paper	
	Felt	
	Flannel	
	Flaxboard	
	Gold-sheet	
	Gut	
	Labels-foil	●
	Labels-paper	●
	Latex	
	Latex foam	
	Leather-smooth	
	Linen	
	Muslin	
	Netting-plastic	
	Nylon	
	Paper	●
	Paper (light-sensitive)	●
	Photographic film	●
	Plastic films	
	Plastics-foam-soft	
Plastics-polyester yarn		
Plastics-polystyrene (expanded)		
Plastics-PVC sheet max. 2 mm		
Printed circuits		
PVC film		
Raffia		
Rubber-foam		
Rubber-sheet		
Stockinette		





# KOBRA CONSUMABLES



Code	Description	Indicated for	
51.091	KOBRA Oil. Lubricates cross-cut knives. Box of 24 bottles of 125 cc each.	Cross-cut models	
51.086	KOBRA Oil for Automatic Oiler. Lubricate cross-cut knives. Box of 24 bottles of 1 liter each.	Cross-cut models with Automatic Oiler	
99.207	Plastic bags. Box of 100 pieces.	245 TS 260 TS AF+1 240.1 260 260.1 300	
99.206	Plastic bags. Box of 100 pieces.	270 TS 310 TS 385 400 COMBI HS/HS-6	
99.203	Plastic bags. Box of 50 pieces.	310 TS HD 410 TS 430 TS AF.1 AF.2 300.1 300.2 390 400 400 WB	
99.208	Plastic bags for CDs/DVDs. Box of 100 pieces.	410 TS	
99.209	Plastic bags. Box of 20 pieces.	430 TS	
51.071	Fabric bag for optical media shreds.	400 HS OM	
51.072	Fabric bag for optical media shreds.	400 COMBI HS/HS-6	
99.202	Plastic bags: 100 pieces.	260 HS/2 SSD HS	
99.210	Plastic bags: 20 pieces.	SSD	
51.221	Plastic bags: 10 pieces.	Cyclone	
51.225/U	Filter bags: 10 pieces.	SSD HS	
51.703	HEPA filter.	SSD HS	
51.225	Filter bags: 10 pieces.	Cyclone vacuum system	
51.230	Plastic sleeve junction.	Cyclone with Compactor	



# ISO/IEC 21964 (DIN 66399) SECURITY LEVELS & DATA CARRIER CLASSIFICATION



**P**

## Data in Original Size on: Paper, Printout, films, printing plates etc.

P-1 Stripe width max 12 mm	P-3 Cross Cut < 320 mm <sup>2</sup>	P-6 Cross Cut < 10 mm <sup>2</sup>
P-2 Stripe width max 6 mm	P-4 Cross Cut < 160 mm <sup>2</sup>	P-7 Cross Cut < 5 mm <sup>2</sup>
	P-5 Cross Cut < 30 mm <sup>2</sup>	



**O**

## Data on Optical Carriers: CDs, DVDs etc.

O-1 Cross Cut < 2000 mm <sup>2</sup>	O-3 Cross Cut < 160 mm <sup>2</sup>	O-6 Cross Cut < 5 mm <sup>2</sup>
O-2 Cross Cut < 800 mm <sup>2</sup>	O-4 Cross Cut < 30 mm <sup>2</sup>	O-7 Cross Cut < 0,2 mm <sup>2</sup>
	O-5 Cross Cut < 10 mm <sup>2</sup>	



**T**

## Data on Magnetic Carriers: Credit Cards, Floppy Disks, ID Cards, Magnetic Tape Cassettes, etc.

T-1 Mechanically inoperable	T-3 Cross Cut < 320 mm <sup>2</sup>	T-6 Cross Cut < 10 mm <sup>2</sup>
T-2 Cross Cut < 2000 mm <sup>2</sup>	T-4 Cross Cut < 160 mm <sup>2</sup>	T-7 Cross Cut < 2,5 mm <sup>2</sup>
	T-5 Cross Cut < 30 mm <sup>2</sup>	



**E**

## Data on electronic data carriers: Memory Sticks, Chip cards, Semiconductor Hard Drives, mobile communication media, etc.

E-1 Mechanically/ Electronically inoperable	E-3 Cross Cut < 160 mm <sup>2</sup>	E-6 Cross Cut < 1 mm <sup>2</sup>
E-2 Split	E-4 Cross Cut < 30 mm <sup>2</sup>	E-7 Cross Cut < 0,5 mm <sup>2</sup>
	E-5 Cross Cut < 10 mm <sup>2</sup>	



**F**

## Reduced size data on: micro-films and foils

F-1 Cross Cut < 160 mm <sup>2</sup>	F-3 Cross Cut < 10 mm <sup>2</sup>	F-6 Cross Cut < 0,5 mm <sup>2</sup>
F-2 Cross Cut < 30 mm <sup>2</sup>	F-4 Cross Cut < 2,5 mm <sup>2</sup>	F-7 Cross Cut < 0,2 mm <sup>2</sup>
	F-5 Cross Cut < 1 mm <sup>2</sup>	



**H**

## Data on Hard Disks (with magnetic data carriers)

H-1 Mechanically/ Electronically inoperable	H-3 Deformed	H-6 Cross Cut < 10 mm <sup>2</sup>
H-2 Damaged	H-4 Cross Cut < 2000 mm <sup>2</sup>	H-7 Cross Cut < 5 mm <sup>2</sup>
	H-5 Cross Cut < 320 mm <sup>2</sup>	

# ELCOMAN

Via Gorizia, 9  
20813 Bovisio Masciago (MB), Italy  
Tel +39 0362 593584  
Fax +39 0362 591611  
kobra@elcoman.it  
www.elcoman.it

**KOBRA**® products are built with the highest  
quality materials according to ISO 9001:2015 Standards

**KOBRA**® Guillotines and Trimmers are built  
according to Safety Standards BS 5498 (British Standards)



UNI EN ISO 9001:2015  
ISO 9001 REGISTERED QUALITY COMPANY

Technical Data as of 02/2020. Specifications  
in this publication may be subject to change  
without notice.

Authorized Dealer